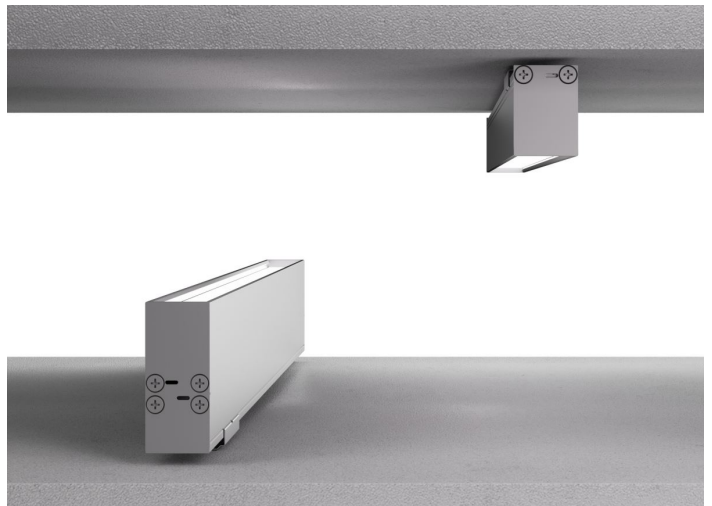
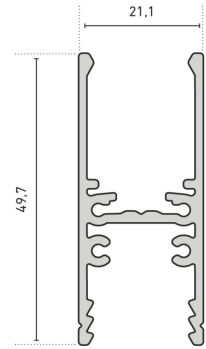


Mounting profile H-System

for all flexible light lines with a flank dimension of 17.5 mm

- high-quality mounting profile, suitable for all flexible light lines with a flank dimension of 17.5 mm
- made of weather-resistant, anodized aluminum
- ideal for installing long, uninterrupted light lines e.g. on facades
- can be used flexibly as surface-mounted or recessed profile or also as pendant luminaires
- suitable for many applications due to flexible mounting system (for example, uneven mounting surfaces etc.)
- practical connector system simplifies the installation of long light lines
- with integrated cable duct
- with cover for the rear side of the profile, for protection against water and dirt
- light lines can be integrated on both sides, for simultaneous direct (e.g. AQUALUC 17.5 series and FLEXLUC TopView 17,5) and indirect lighting (e.g. AQUALUC MINI and FLEXLUC TopView 11)





ALUMINIUM PROFILE

	40500112	40500113
Description	H-system mounting profile	
Length	2000 mm	3000 mm
Width	21,1 mm	
Height	49,7 mm	
Material	Aluminium 6063	

COVER

	40500131	40500132
Description	diffuser satined, PC, for indirect light with suspended/side mounted luminaires, 1000 mm	diffuser satined, PC, for indirect light with suspended/side mounted luminaires, 2000 mm
Material	PMMA	
Length	1000 mm	2000 mm
Width	18,5 mm	
Height	11 mm	



END CAPS

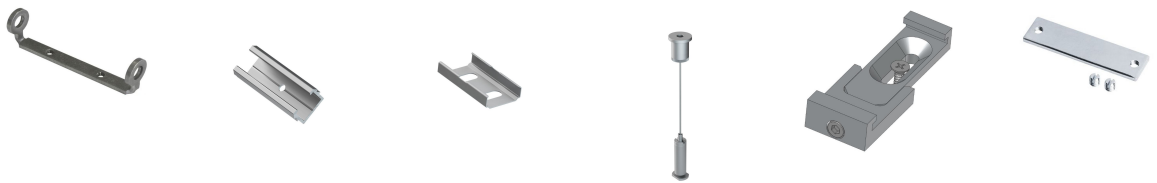
	40500126
Description	end cap set for U- and H-system mounting profiles, aluminum, anodized, 2 pieces
Material	aluminium
Length	2 mm
Width	21,1 mm
Height	29,8 mm

Note: The screws for the end caps must be placed and screwed in at a right angle (90°) to the screw channel and may only be screwed in with a max. tightening torque of 0.35 Nm to prevent the screw head from unscrewing or the screw from overtightening (recommended bit PH1).



ACCESSORIES

	40500123	40500125	40500127	40500128	40500129	62398802
Description	mounting bracket, 316L stainless steel, for tiltable installation of retaining brackets and wall brackets	inner mounting set for H-system mounting profile, aluminum, anodized, 2 pieces	mounting bracket set for U- and H-system mounting profiles, 304 stainless steel, 2 pieces	suspension for ceiling mounting, metal, nickel-plated, (2x 500 cm wire cable, Ø 1mm, with M4 thread	Halteklammern für Montageprofil H-System, zweiteilig	2x straight connectors, metal, incl. 8 grub screws
Material	316L stainless steel	aluminium	304 stainless steel	steel	aluminium	304 stainless steel
Finish	nut treated	anodised	nut treated	nickel-plated	anodised	nut treated
Length	54 mm	50 mm	40 mm	5000 mm	54,6 mm	80 mm
Width	11,8 mm	18,5 mm	22,2 mm	1 mm	20 mm	10,5 mm
Height	24,5 mm	11 mm	7,4 mm		11,4 mm	1,7 mm
Diameter				1 mm		



	62399487	62399488	62399489	62399490
Description	mounting bracket standard, for mounting in ceiling and floor, incl. 2 screws and 2 dowels, distance to wall 15 mm	cantilever arm, for mounting on walls, incl. 2 screws and 2 dowels, distance to wall 65 mm	cantilever arm long, for mounting on walls, incl. 2 screws and 2 dowels, distance to wall 201 mm	mounting bracket 90° Bergamo, incl. 2 screws and 2 dowels, distance to wall 20 mm
Material	304 stainless steel			
Length	73,7 mm	71,4 mm	206,3 mm	40,6 mm
Width	58 mm			
Height	20,4 mm	55,5 mm	85,5 mm	25,4 mm
Remarks	Mounting bracket V2A steel, nylon dowel, spacer sleeve brass nickel plated, screws, washers, snorkel washer, nut			



NOTES

All aluminium profiles and covers are subject to certain length tolerances. This is +20/-0 mm irrespective of the length, i.e. a profile has at least the specified length, but can be up to 20 mm longer.

If you require an exact length, please specify this when ordering (article number 62397000).

Press marks or slight scratches on profiles are production-related and do not constitute a defect.

The guarantee period for the product is 5 years and begins on the day of shipment. Reference is the date of the delivery bill. The guarantee period may differ for accessories.