

LEDlight flex 24 8p High Efficiency Plus

- LED strips for highest demands
- ideal for applications with high daily operating time
- long light lines possible with only one in-feed due to double layer FPC
- very long service life L90/B10 > 60,000 h at Tc < 80 °C
- current regulation by IC for constant brightness over the entire light line
- with reverse polarity protection and TVS surge protection diode
- with high-quality 3M double adhesive tape



Please observe the installation and safety instructions at <https://www.barthelme.de/content/en/manuals.aspx> !

Note re light sources/EPREL: Our LED reels are not subject to classification according to the currently valid regulations. An LED reel contains interconnected light sources, the number and energy efficiency class of which are listed in the data sheet.

PHOTOMETRIC DATA



	50409029	50409025	50409028	50409033	50409027	50409034	50409015
Typ. color temperature	2200 K	2500 K	2700 K	3000 K	3500 K	4000 K	5700 K
Light color	super warm white		warm white	white		cold white	daylight
Typ. luminous flux per meter	1073 lm/m	1174 lm/m	1288 lm/m	1333 lm/m	1542 lm/m	1374 lm/m	1451 lm/m
Efficiency	115 lm/W	125 lm/W	138 lm/W	142 lm/W	165 lm/W	147 lm/W	155 lm/W
Built-in light source	C50009029	C50009025	C50009028	C50009033	C50009027	C50009034	C50009015
Number of light sources	36						
EEC of built-in light source	F	E			D		
Typ. color rendering index	84						
LED beam angle	120 °						
Lifetime L90/B10	>60.000 h						

ELECTRICAL DATA

	50409029	50409025	50409028	50409033	50409027	50409034	50409015
Operating voltage	24 V DC						
Typ. operating current	2,34 A						
Typ. power	56,2 W						
Typ. power per meter	9,4 W/m						

MECHANICAL DATA

	50409029	50409025	50409028	50409033	50409027	50409034	50409015
Length stripe	6000 mm						
Width stripe	8 mm						
Height stripe	1,4 mm						
Number of LEDs per cut	7						
Number of cuts	36						
Length per cut	167 mm						
Type of protection	IP 00						
	50009029	50009025	50009028	50009033	50009027	50009034	50009015
Color temperature	2200 K	2500 K	2700 K	3000 K	3500 K	4000 K	5700 K
EEC of built-in light source	F	E			D		
Cut	Cut length 16,7 cm						

ORDER YOUR DESIRED INDIVIDUAL STRIP LENGTH [CUT]: The order quantity is a multiple of the smallest cutting length of the LED strip (cut). Ordering example: To order your required length of 210 cm of LEDlight flex High Efficiency 08 8 cool white (4000 K): 35x Art.-No. 50008634 (cut length 60 mm x 35 = 210 cm). If you re-quire varying strip lengths then please order each strip length as a separate position.

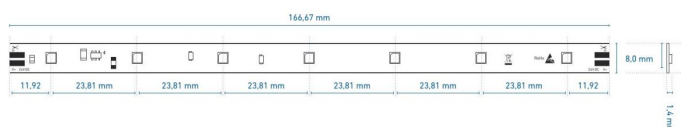
FURTHER DATA

	50409029	50409025	50409028	50409033	50409027	50409034	50409015
Max. operable length¹	7000 mm						
Storage temperature	-30° C ~ +80° C						
Max. temperature Tc²	80 ° C						

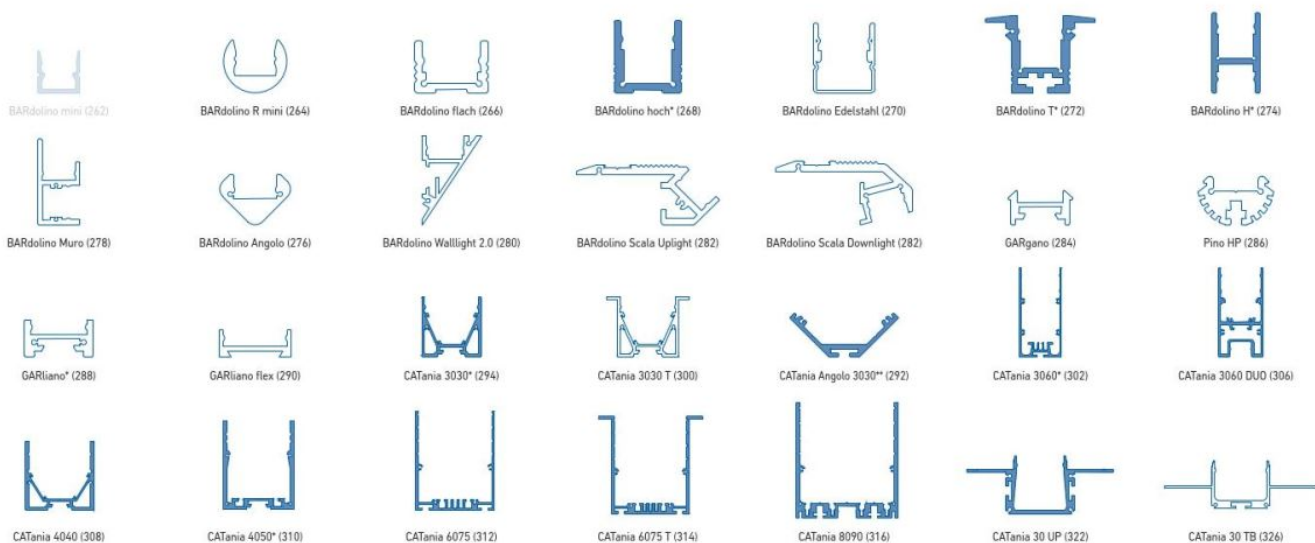
¹The value given applies to the application of the rated voltage at the first module section. When using a supply line, the maximum operable length changes depending on the supply line length and its cross section. At www.barthelme.de you will find an overview table for orientation.

² The Tc point is marked on each cut. This should be measured in the thermally stable state.

TECHNICAL DRAWING



USE IN PROFILES



weiß: LED-Punkte sichtbar, kein homogenes Lichtbild | white: LED dots visible, no uniform light distribution

blau: homogenes Lichtbild möglich | blue: uniform light distribution is possible

* = eine homogene Lichtlinie ist nur in Kombination mit einer hohen Abdeckung möglich | a uniform light line is only possible in combination with a high diffuser

** = nur in Kombination mit rechteckiger Abdeckung | only in combination with rectangular diffuser

@ max. Ta = 25 °C im Betrieb und Montagesituation Aufbau [Einbau bei CATania 30 UP und CATania 30 TB] ansonsten ggf. unzureichende Kühlung | @ max. Ta = 25 °C in operation and surface mounted installation [recessed installation with CATania 30 UP and CATania 30 TB] otherwise possibility of insufficient cooling
Bitte beachten: Unzureichende Kühlung beschädigt den LED-Streifen! | Please note: insufficient cooling will damage the LED strips!

NOTE

LEDs and the electronic components/devices required for their operation are wearing parts and can function for many years depending on use and location. In general, these products are subject to an aging process, the light output of LEDs decreases in the course of their operating life. The aging of LEDs is due to thermal influences. Our LEDs correspond to the operating life, which has e.g. a L90/B10 value. This means that the installed LEDs of a given type retain at least 90% of their luminous efficiency and a maximum of 10% of the installed LEDs can deviate from this. Thus, the decrease of the luminous effect of the LED within the above-mentioned scope within the operating life does not represent a defect according to the current state of technology.

The guarantee period for the product is 5 years and begins on the day of shipment. Reference is the date of the delivery bill. The guarantee period may differ for accessories.