

LEDlight flex 16 8p STANDARD 500

- Length 2000 cm
- LED strips for common applications
- ideal for use in living areas
- good color rendering: CRI Ra typ. 90
- good efficiency: up to 118 lm/W at 4000 K
- long operating life L70 > 60,000 h at Tc < 80 °C
- current regulation by IC for constant brightness over the entire light line with integrated overheating protection
- with TVS surge protection diode
- with high-quality 3M double adhesive tape



*Abbildung ähnlich

Please observe the installation and safety instructions at <https://www.barthelme.de/content/en/manuals.aspx> !

PHOTOMETRIC DATA

	50410928	50410933	50410934
Typ. color temperature	2700 K	3000 K	4000 K
Light color	warm white	white	cold white
Typ. luminous flux per meter	480 lm/m	530 lm/m	560 lm/m
Efficiency	100 lm/W	111 lm/W	118 lm/W
Energy efficiency class	A+	A++	
Typ. color rendering index	90		
LED beam angle	120 °		
Lifetime L70	>60000 h		

ELECTRICAL DATA

	50410928	50410933	50410934
Operating voltage	24 V DC		
Typ. operating current	1000 mA		
Typ. power	24 W		
Typ. power per meter	4,8 W/m		
ESD protection	5000 V		

MECHANICAL DATA

	50410928	50410933	50410934
Length stripe	20000 mm		
Width stripe	8 mm		
Height stripe	1,4 mm		
Number of LEDs per cut	6		
Number of cuts	200		
Length per cut	100 mm		
Type of protection	IP 00		
	50010728	50010733	50010734
Cut	Cut		

ORDER YOUR DESIRED INDIVIDUAL STRIP LENGTH [CUT]: The order quantity is a multiple of the smallest cutting length of the LED strip (cut). Ordering example: To order your required length of 210 cm of LEDlight flex High Efficiency 08 8 cool white (4000 K): 35x Art.-No. 50008634 (cut length 60 mm x 35 = 210 cm). If you re-quire varying strip lengths then please order each strip length as a separate position.

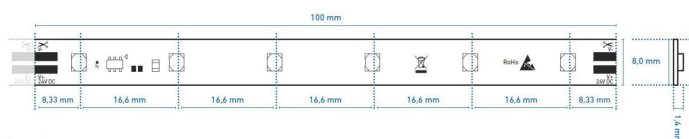
FURTHER DATA

	50410928	50410933	50410934
Max. operable length¹		10300 mm	
Storage temperature		-30 °C ~ +80 °C	
Max. temperature Tc²		80 °C	

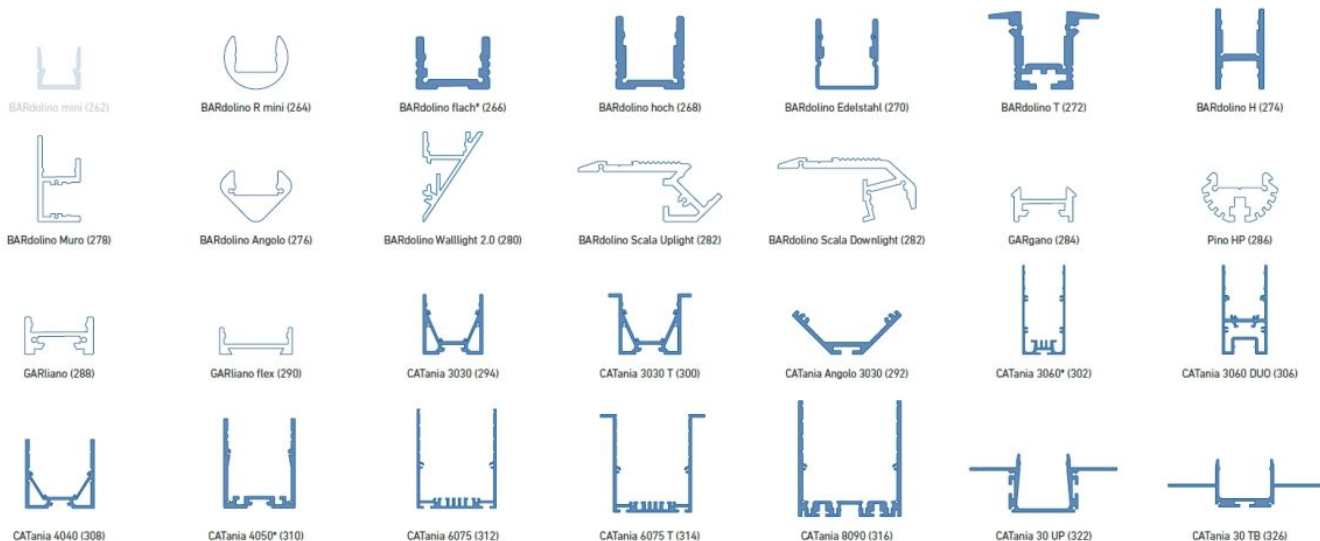
¹The value given applies to the application of the rated voltage at the first module section. When using a supply line, the maximum operable length changes depending on the supply line length and its cross section. At www.barthelme.de you will find an overview table for orientation.

²The Tc point is marked on each cut. This should be measured in the thermally stable state.

TECHNICAL DRAWING



USE IN PROFILES



weiß: LED-Punkte sichtbar, kein homogenes Lichtbild | white: LED dots visible, no uniform light distribution

blau: homogenes Lichtbild möglich | blue: uniform light distribution is possible

* = eine homogene Lichtlinie ist nur in Kombination mit einer hohen Abdeckung möglich | a uniform light line is only possible in combination with a high diffuser

@ max. Ta = 25 °C im Betrieb und Montagesituation Aufbau (Einbau bei CATania 30 UP und CATania 30 TB) ansonsten ggf. unzureichende Kühlung | @ max. Ta = 25 °C in operation and surface mounted installation (recessed installation with CATania 30 UP and CATania 30 TB) otherwise possibility of insufficient cooling

Bitte beachten: Unzureichende Kühlung beschädigt den LED-Streifen! Verarbeitungshinweise zu LEDlight flex siehe S. 368 | Please note: insufficient cooling will damage the LED strips! Processing notes for LEDlight flex see p. 368

The guarantee period for the product is 5 years and begins on the day of shipment. Reference is the date of the delivery bill. The guarantee period may differ for accessories.