

LEDlight flex 08 8 STANDARD 2000 IP66-MFC

- Length 500 cm
- LED strips with protection against dew humidity
- ideal for applications in environments with high humidity (e.g. bathrooms and protected outdoor areas)
- long operating life L70 > 60,000 h at Tc < 80 °C
- current regulation by IC for constant brightness over the entire light line with integrated overheating protection
- with TVS surge protection diode
- with high-quality 3M double adhesive tape



*Abbildung ähnlich

Please observe the installation and safety instructions at <https://www.barthelme.de/content/en/manuals.aspx> !

Note re light sources/EPREL: Our LED reels are not subject to classification according to the currently valid regulations. An LED reel contains interconnected light sources, the number and energy efficiency class of which are listed in the data sheet.

PHOTOMETRIC DATA



	50411628T	50411633T	50411634T
Typ. color temperature	2700 K	3000 K	4000 K
Light color	warm white	white	cold white
Typ. luminous flux per meter	1860 lm/m	2150 lm/m	2190 lm/m
Efficiency	94 lm/W	109 lm/W	111 lm/W
Built-in light source	C50011628	C50011633	C50011634
Number of light sources	100		
EEC of built-in light source	F	E	
Typ. color rendering index	90		
LED beam angle	120 °		
Lifetime L70	>60000 h		

ELECTRICAL DATA

	50411628T	50411633T	50411634T
Operating voltage	24 V DC		
Typ. operating current	4,13 A		
Typ. power	99 W		
Typ. power per meter	19,8 W/m		

MECHANICAL DATA

	50411628T	50411633T	50411634T
Length stripe	5000 mm		
Width stripe	8 mm		
Height stripe	1,4 mm		
Number of LEDs per cut	6		
Number of cuts	100		
Length per cut	50 mm		
Type of protection	66-MFC		

*The LEDlight flex IP 66-MFC (= micro film coating) series has a silicone micro coating for protection against dew humidity. This means that applications in environments with increased humidity (e.g. bathrooms and protected outdoor areas) can also be equipped with Barthelme LEDlight flex lighting solutions. Since the MFC tapes, in contrast to the complete encapsulation of the AQUALUC series, have a wafer-thin coating, the LED strip must always be additionally protected by a suitable housing. For use in directly weathered areas, an IP-protected housing must be used. We recommend the use of

approved bearded helmets, aluminium profiles as well as suitable covers and end caps. An IP66 test according to DIN EN 60598-1 was carried out for the test. The test specimen is exposed to a strong jet of water from all directions for 3 minutes. In order to achieve the dielectric strength according to DIN EN 60598-1, a suitable housing must also be used. Please note that the IP protective layer is damaged during cutting and soldering. To restore full protection, the cut and solder joints must be resealed. A recommendation of our approved protective lacquers can be found at www.barthelme.de. The use of LED strip connectors to connect and join LED strips without tools is not permitted with the MFC strips.

FURTHER DATA

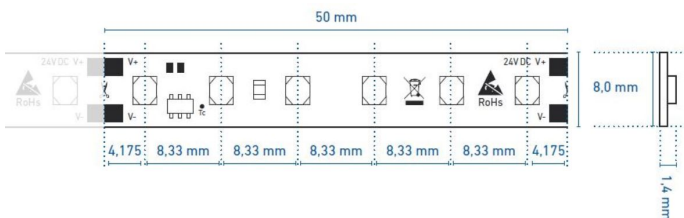
	50411628T	50411633T	50411634T
Max. operable length ¹		4000 mm	
Storage temperature		-30° C ~ +80° C	
Max. temperature Tc ²		80 ° C	

¹The value given applies to the application of the rated voltage at the first module section. When using a supply line, the maximum operable length changes depending on the supply line length and its cross section. At www.barthelme.de you will find an overview table for orientation.

It is possible to operate the entire roll length (5000 mm) with one feed. The change in brightness between the beginning and end of the LED strip is approx. 15%.

²The Tc point is marked on each cut. This should be measured in the thermally stable state.

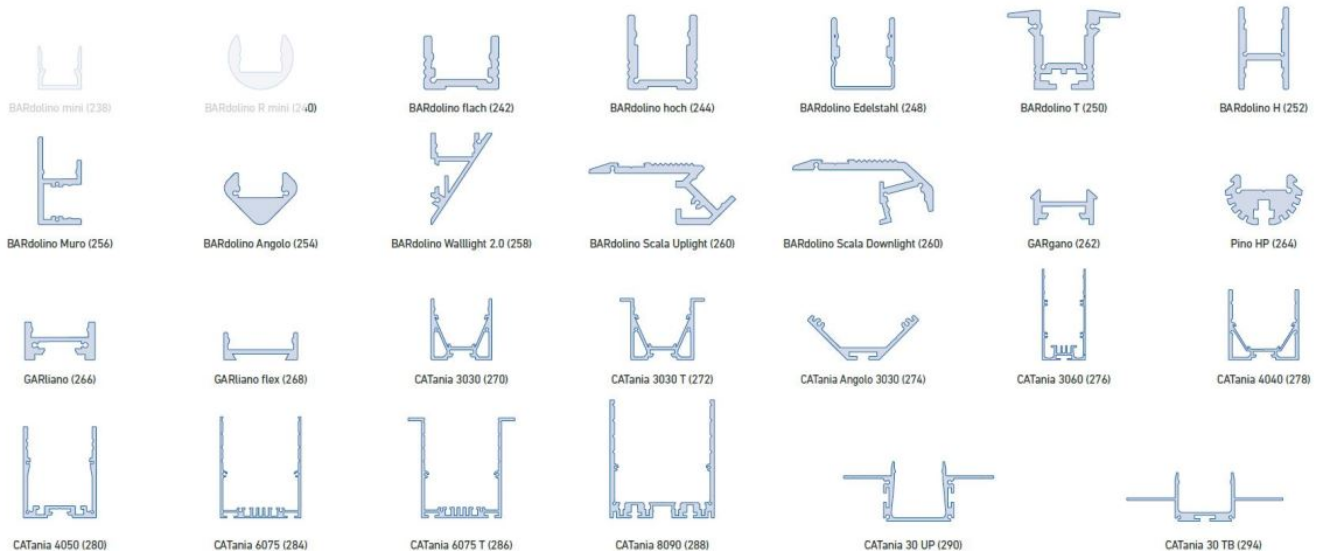
TECHNICAL DRAWING



NOTE FOR INSTALLATION IN PROFILES

Never glue the LED strip over a profile joint! Due to physical expansion or contraction of the profile due to temperature fluctuations, the LED strip can be damaged. This can be remedied by using the right parts for the solder pads at the joint and by using flexible connections, e.g. soldered flexible wire bridges or LED strip connectors.

USE IN PROFILES



@ max. Ta = 25 °C im Betrieb und Montagesituation Aufbau (Einbau bei CATania Unterputz- und Trockenbauprofil) ansonsten ggf. unzureichende Kühlung | @ max. Ta = 25 °C in operation and surface mounted installation (recessed installation with CATania 30 UP and CATania 30 TB) otherwise possibility of insufficient cooling
Bitte beachten: Unzureichende Kühlung beschädigt den LED-Streifen! Verarbeitungshinweise zu LEDlight flex siehe S. 352 | Please note: insufficient cooling will damage the LED strips! Processing notes for LEDlight flex see p. 352

NOTE

LEDs and the electronic components/devices required for their operation are wearing parts and can function for many years depending on use and location. In general, these products are subject to an aging process, the light output of LEDs decreases in the course of their operating life. The aging of

LEDs is due to thermal influences. Our LEDs correspond to the operating life, which has e.g. a L90/B10 value. This means that the installed LEDs of a given type retain at least 90% of their luminous efficiency and a maximum of 10% of the installed LEDs can deviate from this. Thus, the decrease of the luminous effect of the LED within the above-mentioned scope within the operating life does not represent a defect according to the current state of technology.

The guarantee period for the product is 5 years and begins on the day of shipment. Reference is the date of the delivery bill. The guarantee period may differ for accessories.