

LEDlight flex 08 8 STANDARD 2000

- Length 500 cm
- LED strips for common applications
- ideal for use in living areas
- long operating life L70 > 60,000 h at Tc < 80 °C
- current regulation by IC for constant brightness over the entire light line with integrated overheating protection
- with TVS surge protection diode
- with high-quality 3M double adhesive tape



*Abbildung ähnlich

Please observe the installation and safety instructions at <https://www.barthelme.de/content/en/manuals.aspx> !

Note re light sources/EPREL: Our LED reels are not subject to classification according to the currently valid regulations. An LED reel contains interconnected light sources, the number and energy efficiency class of which are listed in the data sheet.

PHOTOMETRIC DATA

	50411628	50411633	50411634
Typ. color temperature	2700 K	3000 K	4000 K
Light color	warm white	white	cold white
Typ. luminous flux per meter	1860 lm/m	2150 lm/m	2190 lm/m
Efficiency	94 lm/W	109 lm/W	111 lm/W
Built-in light source	C50011628	C50011633	C50011634
Number of light sources	100		
EEC of built-in light source	F		
Typ. color rendering index	90		
LED beam angle	120 °		
Lifetime L70	>60000 h		

ELECTRICAL DATA

	50411628	50411633	50411634
Operating voltage	24 V DC		
Typ. operating current	4,1 A		
Typ. power	98,5 W		
Typ. power per meter	19,7 W/m		

MECHANICAL DATA

	50411628	50411633	50411634
Length stripe	5000 mm		
Width stripe	8 mm		
Height stripe	1,4 mm		
Number of LEDs per cut	6		
Number of cuts	100		
Length per cut	50 mm		
Type of protection	IP 00		
	50011628	50011633	50011634
Color temperature	2700 K	3000 K	4000 K
EEC of built-in light source	F		
Cut	Cut		

ORDER YOUR DESIRED INDIVIDUAL STRIP LENGTH [CUT]: The order quantity is a multiple of the smallest cutting length of the LED strip (cut). Ordering example: To order your required length of 210 cm of LEDlight flex High Efficiency 08 8 cool white (4000 K): 35x Art.-No. 50008634 (cut length 60 mm x 35 = 210 cm). If you re-quire varying strip lengths then please order each strip length as a separate position.

FURTHER DATA

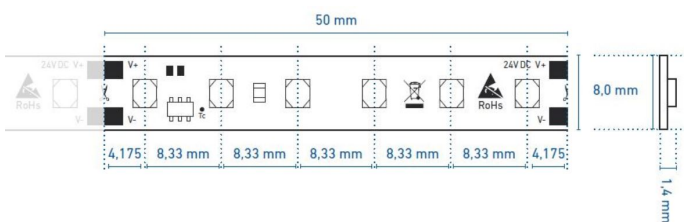
	50411628	50411633	50411634
Max. operable length¹		4000 mm	
Storage temperature		-30° C ~ +80° C	
Max. temperature Tc²		80 ° C	

¹The value given applies to the application of the rated voltage at the first module section. When using a supply line, the maximum operable length changes depending on the supply line length and its cross section. At www.barthelme.de you will find an overview table for orientation.

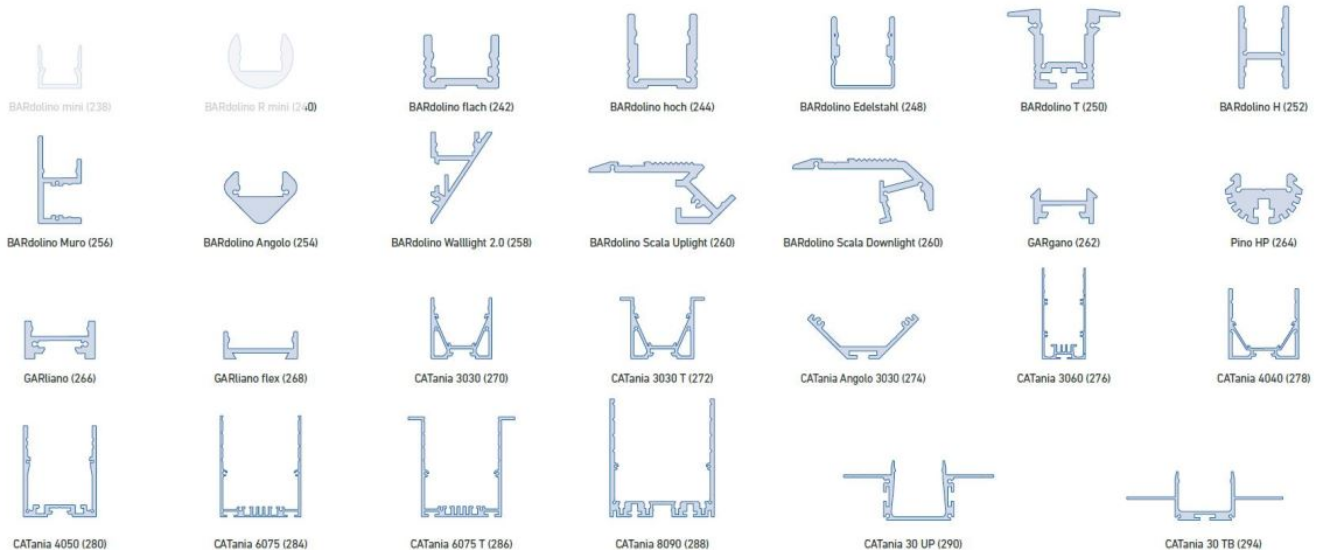
It is possible to operate the entire roll length (5000 mm) with one feed. The change in brightness between the beginning and end of the LED strip is approx. 15%.

²The Tc point is marked on each cut. This should be measured in the thermally stable state.

TECHNICAL DRAWING



USE IN PROFILES



@ max. Ta = 25 °C im Betrieb und Montagesituation Aufbau [Einbau bei CATania Unterputz- und Trockenbauprofil] ansonsten ggf. unzureichende Kühlung | @ max. Ta = 25 °C in operation and surface mounted installation [recessed installation with CATania 30 UP and CATania 30 TB] otherwise possibility of insufficient cooling
Bitte beachten: Unzureichende Kühlung beschädigt den LED-Streifen! Verarbeitungshinweise zu LEDlight flex siehe S. 352 | Please note: insufficient cooling will damage the LED strips! Processing notes for LEDlight flex see p. 352

NOTE

LEDs and the electronic components/devices required for their operation are wearing parts and can function for many years depending on use and location. In general, these products are subject to an aging process, the light output of LEDs decreases in the course of their operating life. The aging of LEDs is due to thermal influences. Our LEDs correspond to the operating life, which has e.g. a L90/B10 value. This means that the installed LEDs of a given type retain at least 90% of their luminous efficiency and a maximum of 10% of the installed LEDs can deviate from this. Thus, the decrease of the luminous effect of the LED within the above-mentioned scope within the operating life does not represent a defect according to the current state of technology.

The guarantee period for the product is 5 years and begins on the day of shipment. Reference is the date of the delivery bill. The guarantee period may differ for accessories.