

LEDlight flex 12 8p 48V 2000

- up to 2.6 times higher in-feed length compared to 24 V DC
- ideal for extra long light lines with only one power supply
- excellent color rendering: CRI Ra typ. 94, R9 > 50
- long light lines with only one feed through double layer FPC possible
- very long operating life L90/B10 > 60,000 h at Tc < 80 °C
- current regulation by IC for constant brightness over the entire light line with integrated overheating protection
- with reverse polarity protection diode and TVS surge protection diode
- with high-quality 3M double adhesive tape



Please observe the installation and safety instructions at <https://www.barthelme.de/content/en/manuals.aspx> !

Note re light sources/EPREL: Our LED reels are not subject to classification according to the currently valid regulations. An LED reel contains interconnected light sources, the number and energy efficiency class of which are listed in the data sheet.



PHOTOMETRIC DATA

	50412328	50412333	50412334
Typ. color temperature	2700 K	3000 K	4000 K
Light color	warm white	white	cold white
Typ. luminous flux per meter	2180 lm/m	2061 lm/m	2189 lm/m
Efficiency	124 lm/W	117 lm/W	125 lm/W
Built-in light source	C50012328	C50012333	C50012334
Number of light sources	112		
EEC of built-in light source	E	F	E
Typ. color rendering index	94		
LED beam angle	120 °		
Lifetime L90/B10	>60.000 h		

ELECTRICAL DATA

	50412328	50412333	50412334
Operating voltage	48 V DC		
Typ. operating current	3,69 A		
Typ. power	177 W		
Typ. power per meter	17,6 W/m		

MECHANICAL DATA

	50412328	50412333	50412334
Length stripe	10080 mm		
Width stripe	8 mm		
Height stripe	2,7 mm		
Number of LEDs per cut	7		
Number of LEDs per metre	78		
Number of cuts	112		
Length per cut	90 mm		
Type of protection	IP 00		
Bending radius	20 mm		
Länge Anschlusskabel	500 mm		

	50012328	50012333	50012334
Color temperature	2700 K	3000 K	4000 K
EEC of built-in light source	E	F	E
Cut	Cut length 90 mm, 2700 K	Cut length 90 mm, 3000 K	Cut length 90 mm, 4000 K

ORDER YOUR DESIRED INDIVIDUAL STRIP LENGTH [CUT]: The order quantity is a multiple of the smallest cutting length of the LED strip (cut). Ordering example: To order your required length of 180 cm of LEDlight flex 12 8p 48V 1000 cool white (4000 K): 20x Art.-No. 50012334 (cut length 90 mm x 20 = 180 cm). If you re-quire varying strip lengths then please order each strip length as a separate position.

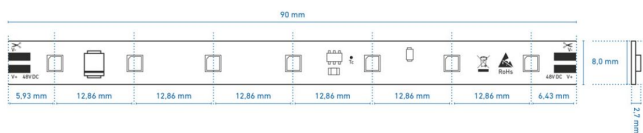
FURTHER DATA

	50412328	50412333	50412334
Max. operable length¹		13590 mm	
Storage temperature		-30° C ~ +80° C	
Max. temperature Tc²		80 ° C	

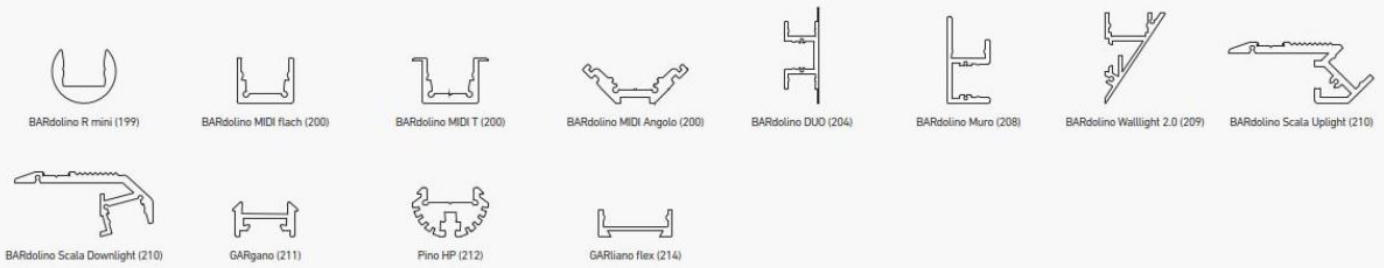
¹The value given applies to the application of the rated voltage at the first module section. When using a supply line, the maximum operable length changes depending on the supply line length and its cross section. At www.barthelme.de you will find an overview table for orientation.

² The Tc point is marked on each cut. This should be measured in the thermally stable state.

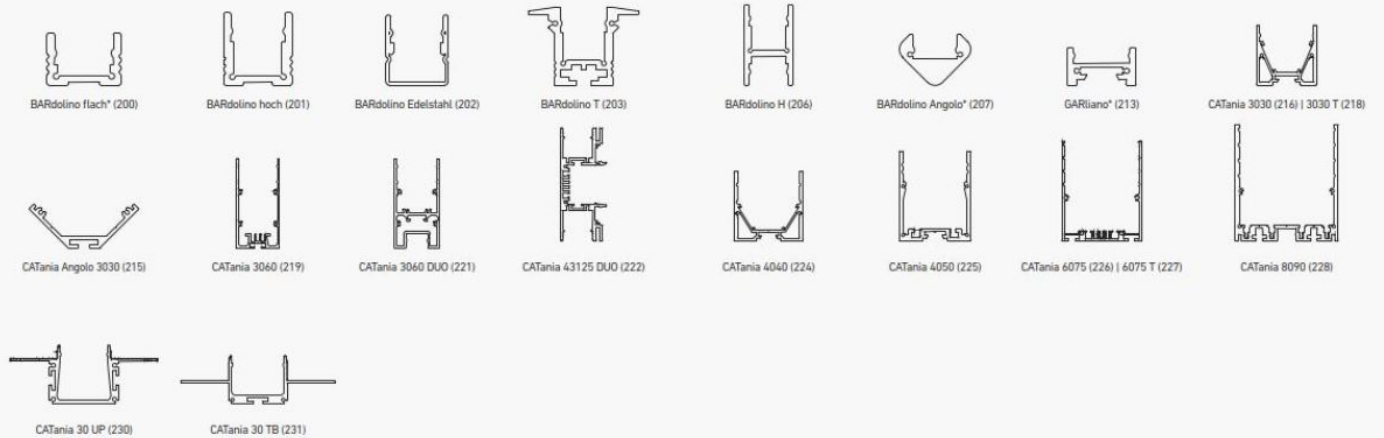
TECHNICAL DRAWING



PROFILNUTZUNG MIT SICHTBAREN LICHTPUNKTEN | PROFILE USE WITH VISIBLE LIGHT POINTS



PROFILNUTZUNG MIT HOMOGENEM LICHT | PROFILE USE WITH HOMOGENEOUS LIGHTING



* = eine homogene Lichtlinie ist nur in Kombination mit einer hohen Abdeckung möglich | a uniform light line is only possible in combination with a high diffusor
 ** = nur in Kombination mit rechteckiger Abdeckung | only in combination with rectangular diffusor
 @ max. Ta = 25 °C im Betrieb und Montagesituation Aufbau (Einbau bei CATania 30 UP und CATania 30 TB) ansonsten ggf. unzureichende Kühlung |
 @ max. Ta = 25 °C in operation and surface mounted installation (recessed installation with CATania 30 UP and CATania 30 TB) otherwise possibility of insufficient cooling
 Bitte beachten: Unzureichende Kühlung beschädigt den LED-Streifen! Verarbeitungshinweise zu LEDlight flex siehe www.barthelme.de | Please note: insufficient cooling will damage the LED strips! Processing notes for LEDlight flex see www.barthelme.de

NOTES

LEDs and the electronic components/devices required for their operation are wearing parts and can function for many years depending on use and location. In general, these products are subject to an aging process, the light output of LEDs decreases in the course of their operating life. The aging of LEDs is due to thermal influences. Our LEDs correspond to the operating life, which has e.g. a L90/B10 value. This means that the installed LEDs of a given type retain at least 90% of their luminous efficiency and a maximum of 10% of the installed LEDs can deviate from this. Thus, the decrease of the luminous effect of the LED within the above-mentioned scope within the operating life does not represent a defect according to the current state of technology.

Never glue the LED strip over a profile joint! Due to physical expansion or contraction of the profile due to temperature fluctuations, the LED strip can be damaged. This can be remedied by using the right parts for the solder pads at the joint and by using flexible connections, e.g. soldered flexible wire bridges or LED strip connectors.

The guarantee period for the product is 5 years and begins on the day of shipment. Reference is the date of the delivery bill. The guarantee period may differ for accessories.

ENTSORGUNG

Bitte helfen Sie mit, Abfall zu vermeiden. Sollten Sie sich einmal von diesem Artikel trennen wollen, so bedenken Sie bitte, dass viele seiner Komponenten aus wertvollen Rohstoffen bestehen und wiederverwertet werden können. Entsorgen Sie ihn daher nicht in der Mülltonne, sondern führen Sie ihn bitte Ihrer Sammelstelle für Elektrogeräte zu. Vielen Dank für Ihre Mithilfe!

