

LEDlight flex 12 10 LITE 1500

- Länge 500 cm
- LED-Streifen für einfache Anwendungen im privaten Wohnbereich
- Stromregulierung über Widerstände
- gute Farbwiedergabe typ. CRI 90
- Lichtstrom bis 1500 Lumen pro Meter möglich
- Lebensdauer L70 >50.000h bei Ta <45°
- mit hochwertigem 3M Klebeband



Please observe the installation and safety instructions at <https://www.barthelme.de/content/en/manuals.aspx> !

Note re light sources/EPREL: Our LED reels are not subject to classification according to the currently valid regulations. An LED reel contains interconnected light sources, the number and energy efficiency class of which are listed in the data sheet.

PHOTOMETRIC DATA



	50414328	50414333	50414334
Typ. color temperature	2700 K	3000 K	4000 K
Light color	warm white	white	cold white
Typ. luminous flux per meter	1350 lm/m	1480 lm/m	1500 lm/m
Efficiency	105 lm/W	116 lm/W	117 lm/W
Built-in light source	C50014328	C50014333	C50014334
Number of light sources	60		
EEC of built-in light source	F	E	
Typ. color rendering index	90		
LED beam angle	120 °		
Lifetime L70	>50000 h		

ELECTRICAL DATA

	50414328	50414333	50414334
Operating voltage	24 V DC		
Typ. operating current	2,67 A		
Typ. power	64 W		
Typ. power per meter	12,8 W/m		

MECHANICAL DATA

	50414328	50414333	50414334
Length stripe	5000 mm		
Width stripe	10 mm		
Height stripe	1,4 mm		
Number of LEDs per cut	7		
Number of LEDs per metre	84		
Number of cuts	60		
Length per cut	83,3 mm		
Type of protection	IP 00		
Bending radius	20 mm		
Länge Anschlusskabel	500 mm		
	50014328	50014333	50014334
Color temperature	2700 K	3000 K	4000 K
EEC of built-in light source	F	E	
Cut	Cut length 83,3 mm		

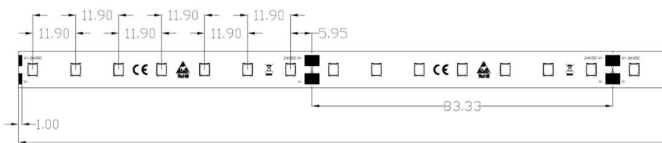
ORDER YOUR DESIRED INDIVIDUAL STRIP LENGTH [CUT]: The order quantity is a multiple of the smallest cutting length of the LED strip (cut). Ordering example: To order your required length of 210 cm of LEDlight flex High Efficiency 08 8 cool white (4000 K): 35x Art.-No. 50008634 (cut length 60 mm x 35 = 210 cm). If you re-quire varying strip lengths then please order each strip length as a separate position.

FURTHER DATA

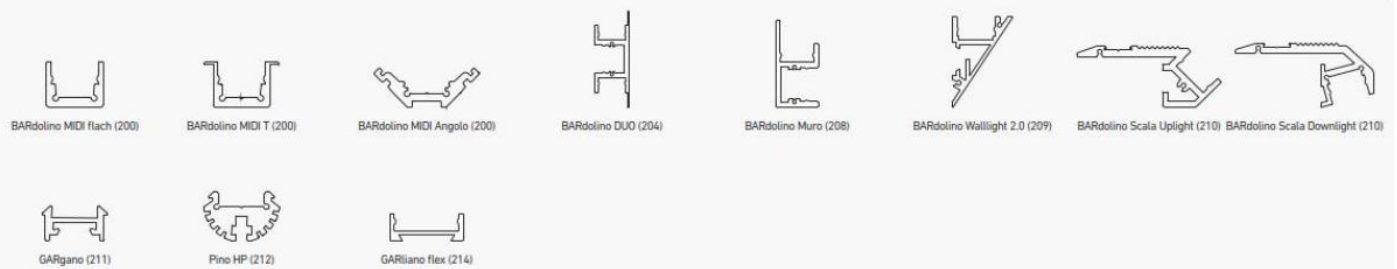
	50414328	50414333	50414334
Max. operable length ¹		5000 mm	
Storage temperature		-30° C ~ +80° C	
Ambient temperature Ta		-20° C ~ +45° C	

¹The value given applies to the application of the rated voltage at the first module section. When using a supply line, the maximum operable length changes depending on the supply line length and its cross section. At www.barthelme.de you will find an overview table for orientation.

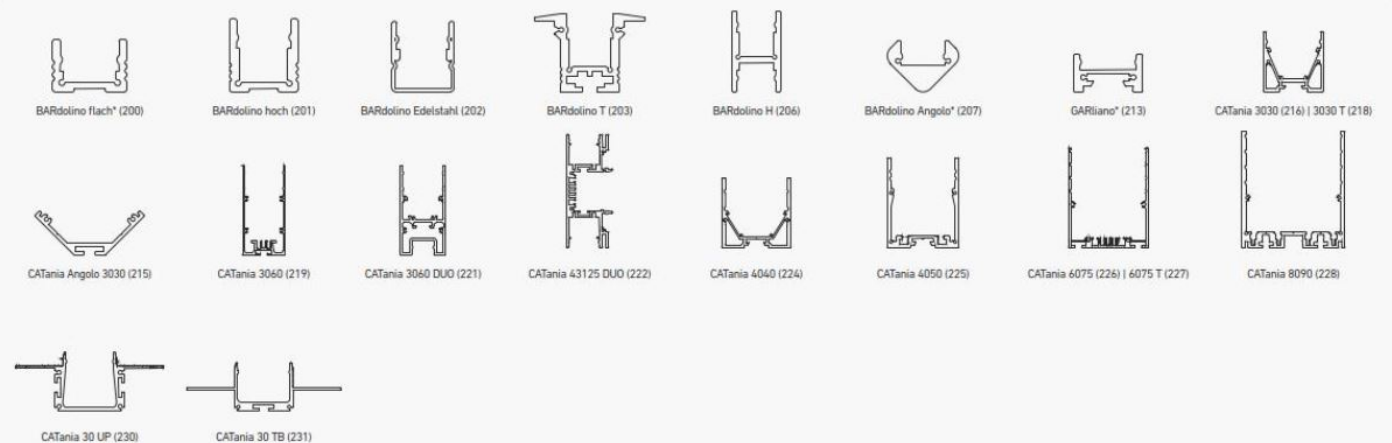
TECHNICAL DRAWING



PROFILNUTZUNG MIT SICHTBAREN LICHTPUNKTEN | PROFILE USE WITH VISIBLE LIGHT POINTS



PROFILNUTZUNG MIT HOMOGENEM LICHT | PROFILE USE WITH HOMOGENEOUS LIGHTING



* = eine homogene Lichtlinie ist nur in Kombination mit einer hohen Abdeckung möglich | a uniform light line is only possible in combination with a high diffuser

** = nur in Kombination mit rechteckiger Abdeckung | only in combination with rectangular diffuser

@ max. Ta = 25 °C im Betrieb und Montagesituation Aufbau (Einbau bei CATania 30 UP und CATania 30 TB) ansonsten ggf. unzureichende Kühlung |

@ max. Ta = 25 °C in operation and surface mounted installation (recessed installation with CATania 30 UP and CATania 30 TB) otherwise possibility of insufficient cooling

Bitte beachten: Unzureichende Kühlung beschädigt den LED-Streifen! Verarbeitungshinweise zu LEDlight flex siehe www.barthelme.de | Please note: insufficient cooling will damage the LED strips! Processing notes for LEDlight flex see www.barthelme.de

NOTES

LEDs and the electronic components/devices required for their operation are wearing parts and can function for many years depending on use and location. In general, these products are subject to an aging process, the light output of LEDs decreases in the course of their operating life. The aging of LEDs is due to thermal influences. Our LEDs correspond to the operating life, which has e.g. a L90/B10 value. This means that the installed LEDs of a given type retain at least 90% of their luminous efficiency and a maximum of 10% of the installed LEDs can deviate from this. Thus, the decrease of the luminous effect of the LED within the above-mentioned scope within the operating life does not represent a defect according to the current state of technology.

Never glue the LED strip over a profile joint! Due to physical expansion or contraction of the profile due to temperature fluctuations, the LED strip can be damaged. This can be remedied by using the right parts for the solder pads at the joint and by using flexible connections, e.g. soldered flexible wire bridges or LED strip connectors.

The guarantee period for the product is 5 years and begins on the day of shipment. Reference is the date of the delivery bill. The guarantee period may differ for accessories.

ENTSORGUNG

Bitte helfen Sie mit, Abfall zu vermeiden. Sollten Sie sich einmal von diesem Artikel trennen wollen, so bedenken Sie bitte, dass viele seiner Komponenten aus wertvollen Rohstoffen bestehen und wiederverwertet werden können. Entsorgen Sie ihn daher nicht in der Mülltonne, sondern führen Sie ihn bitte Ihrer Sammelstelle für Elektrogeräte zu. Vielen Dank für Ihre Mithilfe!

