

# LEDlight flex 15 8p RGB Com- PRO

- control via com- (common cathode)
- LED strips for signalling in commercial and industrial applications
- current control via IC for constant brightness over the entire light line
- with TVS overvoltage protection diode
- with high quality 3M double sided adhesive tape
- operating life L70 > 30,000 at Tc < 67 °C



**IMPORTANT:** Due to the high power, only 1 channel of the LED strip may be operated at a time !

**Please observe the installation and safety instructions at <https://www.barthelme.de/content/en/manuals.aspx> !**

## PHOTOMETRIC DATA



	50415131
Light color	RGB
Typ. wavelength	621 nm;527 nm;467 nm
Typ. luminous flux per meter - red	620 lm/m
Typ. luminous flux per meter - green	1670 lm/m
Typ. luminous flux per meter - blue	350 lm/m
Max. efficiency (light colour green)	69 lm/W
LED beam angle	120 °
Lifetime L70	>30000 h

## ELECTRICAL DATA

	50415131
Operating voltage	24 V DC
Typ. operating current per channel	4,96 A
Typ. power per channel	119 W
Typ. power per meter per channel	24 W/m
Remark	IMPORTANT: Due to the high power, only 1 channel of the LED strip may be operated at a time !

## MECHANICAL DATA

	50415131
Length stripe	4950 mm
Width stripe	8 mm
Height stripe	1,8 mm
Number of LEDs per cut	6
Number of cuts	55
Length per cut	90 mm
Type of protection	IP 00

**ORDER YOUR DESIRED INDIVIDUAL STRIP LENGTH [CUT]:** The order quantity is a multiple of the smallest cutting length of the LED strip (cut). Ordering example: To order your required length of 210 cm of LEDlight flex High Efficiency 08 8 cool white (4000 K): 35x Art.-No. 50008634 (cut length 60 mm x 35 = 210 cm). If you re-quire varying strip lengths then please order each strip length as a separate position.

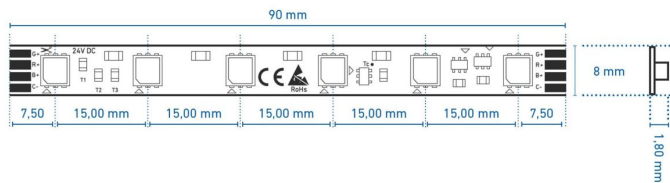
## GENERAL DATA

	50415131
Max. operable length <sup>1</sup>	5000 mm
Storage temperature	-30° C ~ +80° C
Max. temperature Tc <sup>2</sup>	67° C

<sup>1</sup>The value given applies to the application of the rated voltage at the first module section. When using a supply line, the maximum operable length changes depending on the supply line length and its cross section. At [www.barthelme.de](http://www.barthelme.de) you will find an overview table for orientation.

<sup>2</sup>The Tc point is marked on each cut. This should be measured in the thermally stable state.

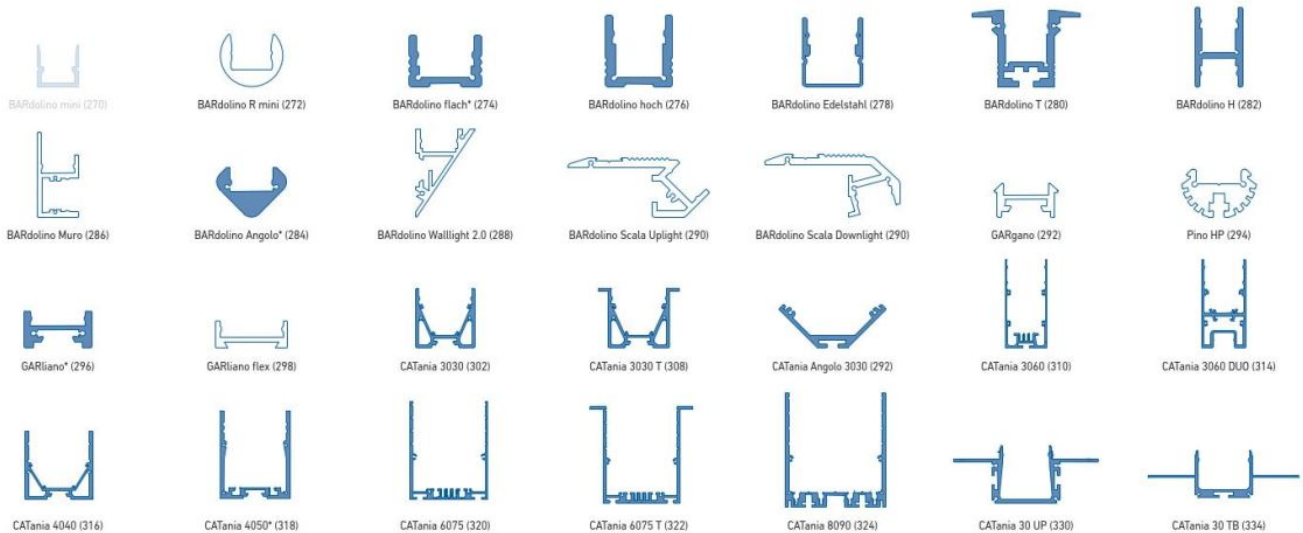
## TECHNICAL DRAWING



## NOTE FOR INSTALLATION IN PROFILES

Never glue the LED strip over a profile joint! Due to physical expansion or contraction of the profile due to temperature fluctuations, the LED strip can be damaged. This can be remedied by using the right parts for the solder pads at the joint and by using flexible connections, e.g. soldered flexible wire bridges or LED strip connectors.

## USE IN PROFILES



weiß: LED-Punkte sichtbar, kein homogenes Lichtbild | white: LED dots visible, no uniform light distribution  
blau: homogenes Lichtbild möglich | blue: uniform light distribution is possible

\* = eine homogene Lichtlinie ist nur in Kombination mit einer hohen Abdeckung möglich | a uniform light line is only possible in combination with a high diffuser

@ max. Ta = 25 °C im Betrieb und Montagesituation Aufbau [Einbau bei CATania 30 UP und CATania 30 TB] ansonsten ggf. unzureichende Kühlung | @ max. Ta = 25 °C in operation and surface mounted installation [recessed installation with CATania 30 UP and CATania 30 TB] otherwise possibility of insufficient cooling  
Bitte beachten: Unzureichende Kühlung beschädigt den LED-Streifen! | Please note: insufficient cooling will damage the LED strips!

The guarantee period for the product is 5 years and begins on the day of shipment. Reference is the date of the delivery bill. The guarantee period may differ for accessories.