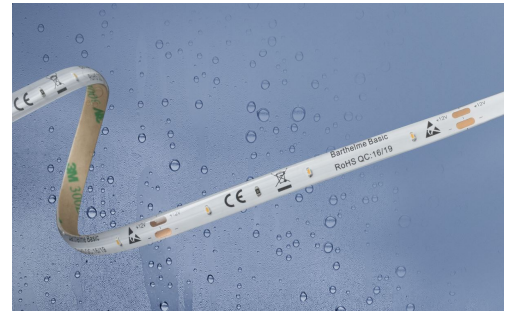


LED STRIP BASIC 30 IP54

- Flexible, self-adhesive LED strip with protection against splash water and dew humidity
- Ideal for indoor and weather protected outdoor applications
- High light quality and true-to-life representation of colours through a high colour rendering index > 90 (CRI>90)
- Suitable for applications with medium brightness requirements
- The small width of the strip of only 8 mm allows the problem-free gluing in commercially available aluminium profiles, which provide sufficient cooling
- Mounting with self-adhesive 3M adhesive tape



PHOTOMETRIC DATA



	51540428	51540433	51540434
Typ. colour temperature ±15%	2700 K	3000 K	4000 K
Light color	warm white	white	cold white
Typ. luminous flux per meter	160 lm/m		173 lm/m
Efficiency	65 lm/W		72 lm/W
Typ. color rendering index	90		
LED beam angle	120 °		
Lifetime L70	30000 h		

ELECTRICAL DATA

	51540428	51540433	51540434
Operating voltage	12 V DC		
Typ. operating current	1000 mA		
Typ. power	12 W		
Typ. power per meter	2,4 W/m		

MECHANICAL DATA

	51540428	51540433	51540434
Length stripe	5000 mm		
Width stripe	8 mm		
Height stripe	2 mm		
Number of LEDs per cut	3		
Number of LEDs per metre	30		
Number of cuts	50		
Length per cut	100 mm		
Type of protection	IP 54		
Bending radius	30 mm		
Länge Anschlusskabel	150 mm		

FURTHER DATA

	51540428	51540433	51540434
Max. operable length ¹	5000 mm		

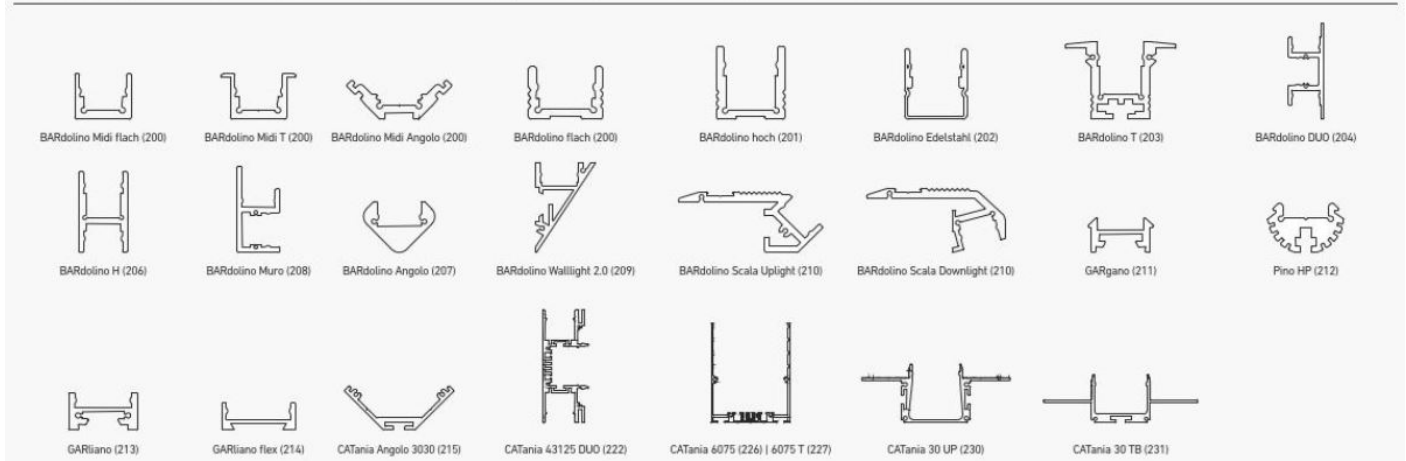
¹The value given applies to the application of the rated voltage at the first module section. When using a supply line, the maximum operable length changes depending on the supply line length and its cross section.

TECHNICAL DRAWING

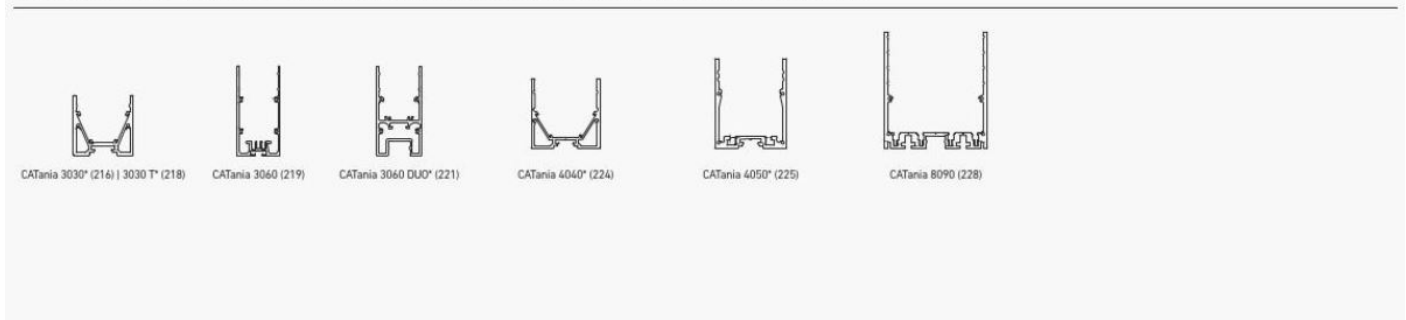


USE IN PROFILES

PROFILNUTZUNG MIT SICHTBAREN LICHTPUNKTEN | PROFILE USE WITH VISIBLE LIGHT POINTS



PROFILNUTZUNG MIT HOMOGENEM LICHT | PROFILE USE WITH HOMOGENEOUS LIGHTING



* = eine homogene Lichtlinie ist nur in Kombination mit einer hohen Abdeckung möglich | a uniform light line is only possible in combination with a high diffuser
** = nur in Kombination mit rechteckiger Abdeckung | only in combination with rectangular diffuser

@ max. Ta = 25 °C im Betrieb und Montagesituation Aufbau (Einbau bei CATania 30 UP und CATania 30 TB) ansonsten ggf. unzureichende Kühlung |

@ max. Ta = 25 °C in operation and surface mounted installation (recessed installation with CATania 30 UP and CATania 30 TB) otherwise possibility of insufficient cooling

Bitte beachten: Unzureichende Kühlung beschädigt den LED-Streifen! Verarbeitungshinweise zu LEDlight flex siehe www.barthelme.de | Please note: insufficient cooling will damage the LED strips! Processing notes for LEDlight flex see www.barthelme.de

NOTES

LEDs and the electronic components/devices required for their operation are wearing parts and can function for many years depending on use and location. In general, these products are subject to an aging process, the light output of LEDs decreases in the course of their operating life. The aging of LEDs is due to thermal influences. Our LEDs correspond to the operating life, which has e.g. a L70 value. This means that the installed LEDs of a given type retain at least 70% of their luminous efficiency. Thus, the decrease of the luminous effect of the LED within the above-mentioned scope within the operating life does not represent a defect according to the current state of technology.

Never glue the LED strip over a profile joint! Due to physical expansion or contraction of the profile due to temperature fluctuations, the LED strip can be damaged. This can be remedied by using the right parts for the solder pads at the joint and by using flexible connections, e.g. soldered flexible wire bridges or LED strip connectors.

The guarantee period for the product is 2 years and begins on the day of shipment. Reference is the date of the delivery bill. The guarantee period may differ for accessories.

ENTSORGUNG

Bitte helfen Sie mit, Abfall zu vermeiden. Sollten Sie sich einmal von diesem Artikel trennen wollen, so bedenken Sie bitte, dass viele seiner Komponenten aus wertvollen Rohstoffen bestehen und wiederverwertet werden können. Entsorgen Sie ihn daher nicht in der Mülltonne, sondern führen Sie ihn bitte Ihrer Sammelstelle für Elektrogeräte zu. Vielen Dank für Ihre Mithilfe!

