

# LED STRIP BASIC 128

- flexibler LED-Streifen für einfache Anwendungen
- ideal für den Einsatz im Wohnbereich
- hohe Lichtqualität und naturgetreue Darstellung von Farben durch hohen Farbwiedergabeindex CRI>90
- geeignet für Anwendungen mit hohem Helligkeitsbedarf
- Stromregelung durch Widerstände
- teilbar mittels Schere an den Markierungen
- einfache Montage mit rückseitigem Klebeband



## PHOTOMETRIC DATA

24 VDC	19.2 W/m	PITCH 7.8	120°	500 cm max
--------	----------	-----------	------	------------

	51542228	51542233	51542234
Typ. colour temperature ±15%	2700 K	3000 K	4000 K
Light color	warm white	white	cold white
Typ. luminous flux per meter	2112 lm/m		2304 lm/m
Efficiency	110 lm/W		120 lm/W
Item number light source(s)	LQ51542228	LQ51542233	LQ51542234
Anzahl der Lichtquelle(n)	80		
EEC of installed light source(s)	F		E
Typ. color rendering index	>90		
LED beam angle	120 °		
Lifetime L70	30000 h		

## ELECTRICAL DATA

	51542228	51542233	51542234
Operating voltage	24 V DC		
Typ. operating current	4 A		
Typ. power	96 W		
Typ. power per meter	19.2 W/m		

## MECHANICAL DATA

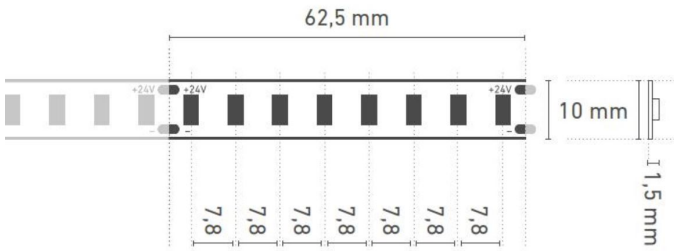
	51542228	51542233	51542234
Length stripe	5000 mm		
Width stripe	10 mm		
Height stripe	1,4 mm		
Number of LEDs per cut	8		
Number of LEDs per metre	128		
Number of cuts	80		
Length per cut	62,5 mm		
Type of protection	IP 00		
Bending radius	30 mm		
Länge Anschlusskabel	150 mm		

## FURTHER DATA

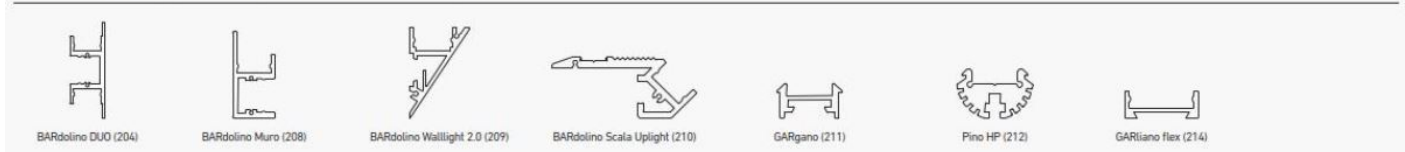
	51542228	51542233	51542234
Operating temperature	-20° C ~ +45° C ° C		
Storage temperature	0° C ~ +60° C		

<sup>1</sup>The value given applies to the application of the rated voltage at the first module section. When using a supply line, the maximum operable length changes depending on the supply line length and its cross section.

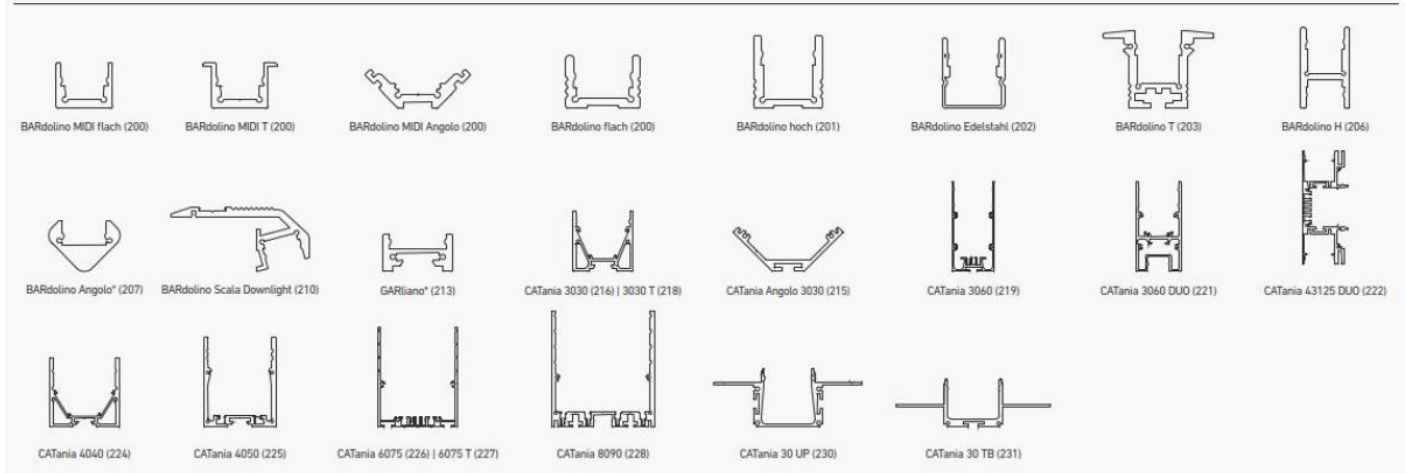
**TECHNICAL DRAWING**



**PROFILNUTZUNG MIT SICHTBAREN LICHTPUNKTEN | PROFILE USE WITH VISIBLE LIGHT POINTS**



**PROFILNUTZUNG MIT HOMOGEMEM LICHT | PROFILE USE WITH HOMOGENEOUS LIGHTING**



\* = eine homogene Lichtlinie ist nur in Kombination mit einer hohen Abdeckung möglich | a uniform light line is only possible in combination with a high diffuser  
 \*\* = nur in Kombination mit rechteckiger Abdeckung | only in combination with rectangular diffuser  
 @ max. Ta = 25 °C im Betrieb und Montagesituation Aufbau [Einbau bei CATania 30 UP und CATania 30 TB] ansonsten ggf. unzureichende Kühlung |  
 @ max. Ta = 25 °C in operation and surface mounted installation [recessed installation with CATania 30 UP and CATania 30 TB] otherwise possibility of insufficient cooling  
 Bitte beachten: Unzureichende Kühlung beschädigt den LED-Streifen! Verarbeitungshinweise zu LEDlight flex siehe [www.barthelme.de](http://www.barthelme.de) | Please note: insufficient cooling will damage the LED strips! Processing notes for LEDlight flex see [www.barthelme.de](http://www.barthelme.de)

**NOTES**

LEDs and the electronic components/devices required for their operation are wearing parts and can function for many years depending on use and location. In general, these products are subject to an aging process, the light output of LEDs decreases in the course of their operating life. The aging of LEDs is due to thermal influences. Our LEDs correspond to the operating life, which has e.g. a L70 value. This means that the installed LEDs of a given type retain at least 70% of their luminous efficiency. Thus, the decrease of the luminous effect of the LED within the above-mentioned scope within the operating life does not represent a defect according to the current state of technology.

Never glue the LED strip over a profile joint! Due to physical expansion or contraction of the profile due to temperature fluctuations, the LED strip can be damaged. This can be remedied by using the right parts for the solder pads at the joint and by using flexible connections, e.g. soldered flexible wire bridges or LED strip connectors.

The guarantee period for the product is 2 years and begins on the day of shipment. Reference is the date of the delivery bill. The guarantee period may differ for accessories.

## ENTSORGUNG

Bitte helfen Sie mit, Abfall zu vermeiden. Sollten Sie sich einmal von diesem Artikel trennen wollen, so bedenken Sie bitte, dass viele seiner Komponenten aus wertvollen Rohstoffen bestehen und wiederverwertet werden können. Entsorgen Sie ihn daher nicht in der Mülltonne, sondern führen Sie ihn bitte Ihrer Sammelstelle für Elektrogeräte zu. Vielen Dank für Ihre Mithilfe!

