

LED STRIP BASIC COB 480

- homogeneous, flexible COB (Chip on Board) LED strip for indoor use
- extremely high chip density: 546 LED chips per meter
- no single light points thanks to continuous phosphor layer
- ideal for installation in flat profiles
- homogeneous light lines can also be realized in combination with clear diffusers for protection against dust
- high-quality 3M double-sided adhesive tape on the back for easy installation
- the very short pitch of only 50 mm offers great flexibility in luminaire construction
- good color rendering CRI > 90
- smoothly dimmable without loss of efficiency
- the beam angle of the COB LED strip is 170°



PHOTOMETRIC DATA

24 VDC	11 W/m	PITCH 2.1	170°	500 cm max.
--------	--------	-----------	------	-------------

	51542328	51542333	51542334
Typ. colour temperature ±15%	2700 K	3000 K	4000 K
Light color	warm white	white	cold white
Typ. luminous flux per meter	1012 lm/m		1154 lm/m
Efficiency	92 lm/W		105 lm/W
Typ. color rendering index	>90		
LED beam angle	170 °		
Lifetime L70	30000 h		

ELECTRICAL DATA

	51542328	51542333	51542334
Operating voltage	24 V DC		
Typ. operating current	2,29 A		
Typ. power	55 W		
Typ. power per meter	11 W/m		

MECHANICAL DATA

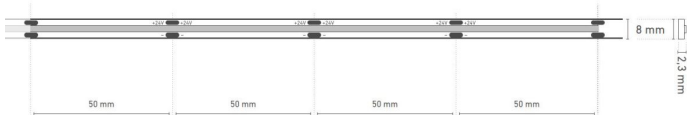
	51542328	51542333	51542334
Length stripe	5000 mm		
Width stripe	8 mm		
Height stripe	2,3 mm		
Number of LEDs per cut	24		
Number of LEDs per metre	480		
Number of cuts	100		
Length per cut	50 mm		
Type of protection	IP 00		
Bending radius	30 mm		
Länge Anschlusskabel	150 mm		

FURTHER DATA

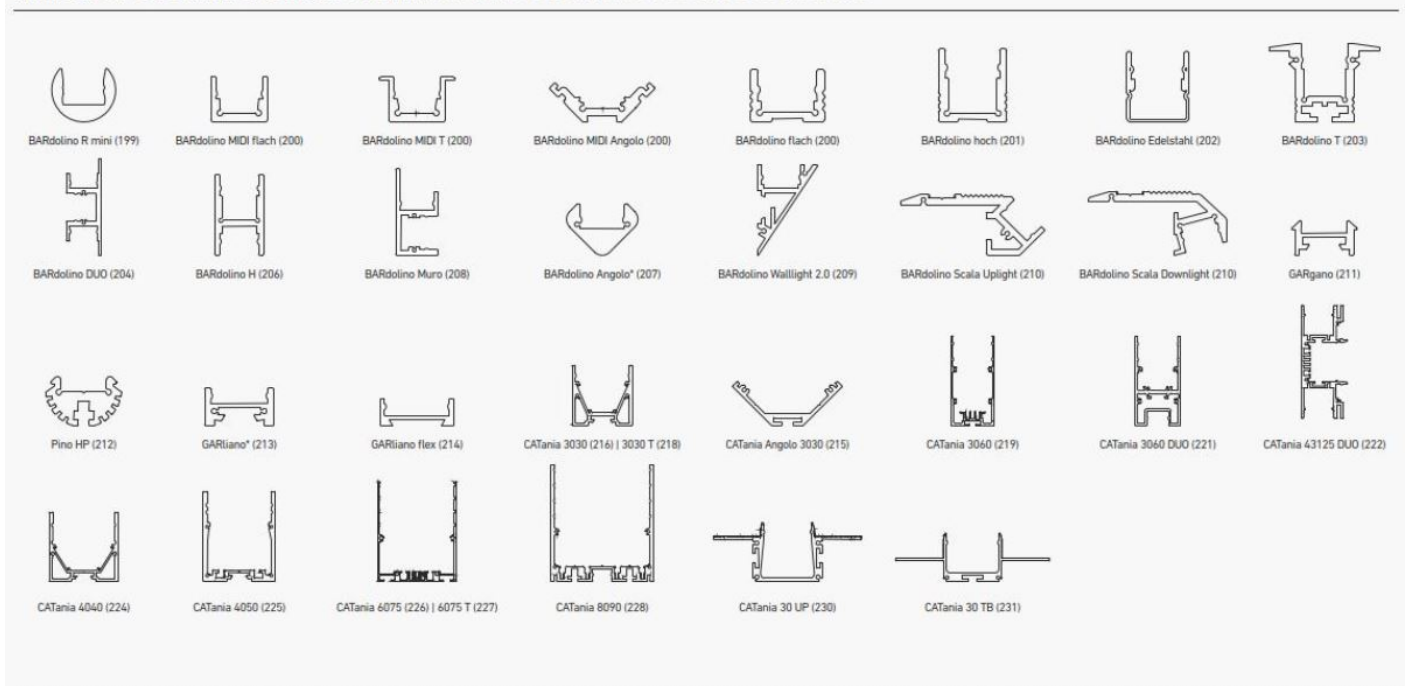
	51542328	51542333	51542334
Operating temperature		-20° C ~ +45° C ° C	
Storage temperature		0° C ~ +60° C	

¹The value given applies to the application of the rated voltage at the first module section. When using a supply line, the maximum operable length changes depending on the supply line length and its cross section.

TECHNICAL DRAWING



PROFILNUTZUNG MIT HOMOGENEM LICHT | PROFILE USE WITH HOMOGENEOUS LIGHTING



* = eine homogene Lichtlinie ist nur in Kombination mit einer hohen Abdeckung möglich | a uniform light line is only possible in combination with a high diffuser

** = nur in Kombination mit rechteckiger Abdeckung | only in combination with rectangular diffuser

@ max. Ta = 25 °C im Betrieb und Montagesituation Aufbau [Einbau bei CATania 30 UP und CATania 30 TB] ansonsten ggf. unzureichende Kühlung |

@ max. Ta = 25 °C in operation and surface mounted installation [recessed installation with CATania 30 UP and CATania 30 TB] otherwise possibility of insufficient cooling

Bitte beachten: Unzureichende Kühlung beschädigt den LED-Streifen! Verarbeitungshinweise zu LEDlight flex siehe www.barthelme.de | Please note: insufficient cooling will damage the LED strips! Processing notes for LEDlight flex see www.barthelme.de

NOTES

LEDs and the electronic components/devices required for their operation are wearing parts and can function for many years depending on use and location. In general, these products are subject to an aging process, the light output of LEDs decreases in the course of their operating life. The aging of LEDs is due to thermal influences. Our LEDs correspond to the operating life, which has e.g. a L70 value. This means that the installed LEDs of a given type retain at least 70% of their luminous efficiency. Thus, the decrease of the luminous effect of the LED within the above-mentioned scope within the operating life does not represent a defect according to the current state of technology.

Never glue the LED strip over a profile joint! Due to physical expansion or contraction of the profile due to temperature fluctuations, the LED strip can be damaged. This can be remedied by using the right parts for the solder pads at the joint and by using flexible connections, e.g. soldered flexible wire bridges or LED strip connectors.

The guarantee period for the product is 2 years and begins on the day of shipment. Reference is the date of the delivery bill. The guarantee period may differ for accessories.

ENTSORGUNG

Bitte helfen Sie mit, Abfall zu vermeiden. Sollten Sie sich einmal von diesem Artikel trennen wollen, so bedenken Sie bitte, dass viele seiner Komponenten aus wertvollen Rohstoffen bestehen und wiederverwertet werden können. Entsorgen Sie ihn daher nicht in der Mülltonne, sondern führen Sie ihn bitte Ihrer Sammelstelle für Elektrogeräte zu. Vielen Dank für Ihre Mithilfe!

