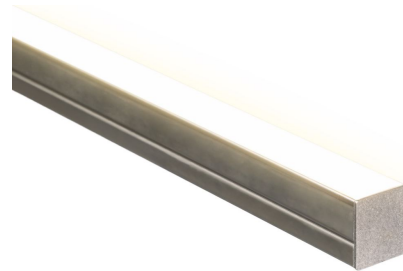


WHITEBAR - LINEAR WORKPLACE LUMINAIRE

Luminaire made of stainless steel - light color white

- With their compact design and robust construction, the luminaires in our WhiteBar machine luminaire series are ideal for illuminating industrial workplaces. They ensure full-surface, homogeneous illumination of machine interiors or complete work areas.
- Temperature range -20°C - +40°C
- Housing with optimum temperature dissipation
- High color rendering for natural illumination CRI>85
- Protection class IP67
- Wide beam 120° for full area homogeneous illumination
- Flicker-free light without UV and IR content in the light
- High luminous efficacy over the entire illuminated area
- Further information can be found here: industrie.barthelme.de



LIGHT DATA



	601210500	601210501	601310470	601310471
Version	Machine luminaire WhiteBar VA 5 Lo P	Machine luminaire WhiteBar VA 5 Lo	Machine luminaire WhiteBar VA 5 Hi P	Machine luminaire WhiteBar VA 5 Hi
Typ. color temperature	4200 K			
Light color	cold white			
Number of LEDs	56		54	

POWER DATA

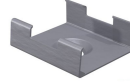
	601210500	601210501	601310470	601310471
Constant voltage/Constant current	CV			
Operating voltage	24 V DC			
Typ. current consumption	160 mA		370 mA	
Typ. power	3,84 W		8,9 W	
Lifetime L70	>30000 h			

FURTHER DATA

	601210500	601210501	601310470	601310471
Material	Aluminium			
Finish	anodised			
Color of material	Aluminium			
Vergusstyp	Full encapsulation frosted hard			
Type of protection	IP 67			
Length	502 mm		472 mm	
Width	17,4 mm			
Height	19,7 mm			
Cable length/cable finishing	0,35m cable with M8 connector	2m cable with free wire ends	0,35m cable with M8 connector	2m cable with free wire ends
Cable feed-in	end cap			

ACCESSORIES

62399148	
Description	BARdolino mounting clip set, 2 holding clips + 2 screws, stainless steel (V4A)



OVERVIEW

