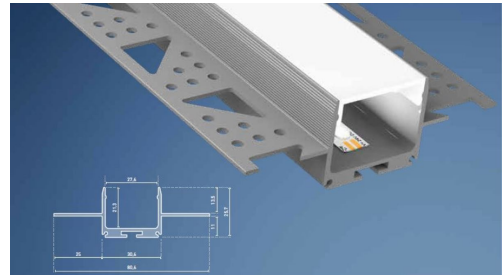


CATania 30 dry construction profile

- hardly visible aluminium edge in installed condition
- can be mounted without having to intervene in the substructure thanks to 25 mm height
- perforated wings for user-friendly installation
- all CATania 30 covers and inserts can be mounted
- in combination with the CATania 30 UP profile, a continuous light line passing from ceiling to wall is possible

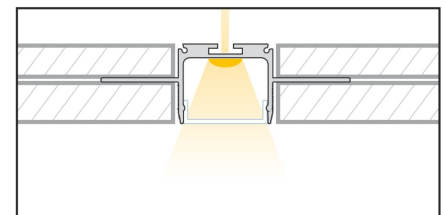
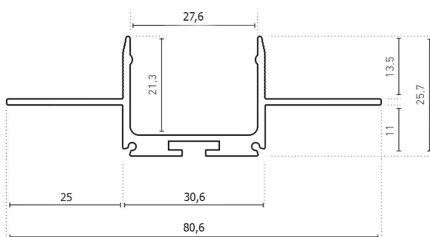


Please refer to the notes on expansion and assembly at the end of the data sheet!

ALUMINIUM PROFILE

	62394151
Description	CATania 30 dry construction profile, aluminium raw
Length	1000 mm
Width	80,6 mm
Height	25,7 mm
Colour	aluminium
Material	Aluminium EN AW 6060
Finish	nut treated
Weight	540 gr

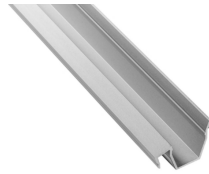
For other lengths please replace the last digit of the article number by: 2 = 2.01m / 3 = 3.02m / 5 = 5.03m



INLAY

	62398841
Description	CATania insert profile, asymmetrical, for mounting the LEDlight flex family, combinable with GARTiano covers, light deflection 14°
Material	Aluminium EN AW 6060
Finish	anodised
Length	1000 mm
Width	27,4 mm
Height	17,91 mm

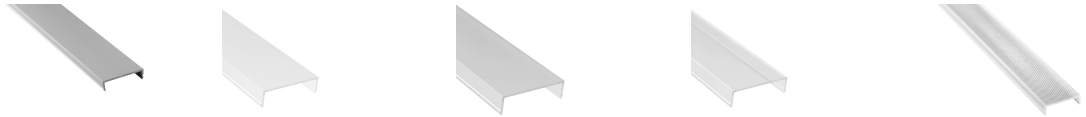
For other lengths please replace the last digit of the article number by: 2 = 2.01m / 3 = 3.02m / 5 = 5.03m



COVER

	62398851	62399821	62399851	62399861	62399871
Description	anodised aluminium cover	Diffuser opal, for a homogenous and glare-free light distribution	Diffuser satined, little light consumption and hiding technical view at the same time	Diffuser clear, for maximum light yield and protection of the LED strip	prisma cover to reduce the dazzling effect
Material	aluminium	PMMA			
Version	aluminium	opal white	satined	clear	prisma
Transmission in %	0	77	84	91	
Length				1000 mm	
Width				27,4 mm	
Height				7,9 mm	

For other lengths please replace the last digit of the article number by: 2 = 2.01m / 3 = 3.02m / 5 = 5.03m



END CAPS

	62394145
Description	End cap set CATania 30 dry construction profile, aluminium raw
Material	Aluminium EN AW 5052
Colour	aluminium
Length	1,5 mm
Width	30,6 mm
Height	25,7 mm

Note: The screws for the end caps must be placed and screwed in at a right angle (90°) to the screw channel and may only be screwed in with a max. tightening torque of 0.35 Nm to prevent the screw head from unscrewing or the screw from overtightening (recommended bit PH1).

ACCESSORIES

	62398802	62398803	62398806
Description	2x straight connectors, metal, incl. 8 grub screws	2x connectors, 90° angle, metal, incl. 8 grub screws	profile connector set adjustable, 304 stainless steel, 2 pieces, incl. grub screws, for an angled light line
Material	304 stainless steel		
Finish	nut treated		
Colour	silbergrau		
Length	80 mm	50,5 mm	104 mm
Width	10,5 mm	50,5 mm	10,5 mm
Height	1,7 mm		7 mm



All aluminium profiles and covers are subject to certain length tolerances. This is +20/-0 mm irrespective of the length, i.e. a profile has at least the specified length, but can be up to 20 mm longer.

If you require an exact length, please specify this when ordering (article number 62397000).

Please note that the materials aluminum and PMMA can expand when the temperature changes vary greatly. With a temperature change of 20°C the expansion difference can be up to 1.2 mm per meter! This is no deficiency of the product but a normal physical process.

Installation note: If you directly install two aluminum profiles edge to edge (without end caps), please pay attention during installation, that you don't glue the LED strip directly over the joint, since the profiles at temperature fluctuations - especially at large lengths - will expand/contract (s. section 1) and then the LED tape may be damaged. At joints the LED strip has to be cut at the marked positions and reconnected with flexible solder bridges with corresponding expansion reserve (min. 5mm).

NOTES

Press marks or slight scratches on profiles are production-related and do not constitute a defect.

Loose, wipeable impurities may appear on the aluminum and plastic profiles. This is due to the production and its handling and does not represent a defect. We generally recommend cleaning the profiles with a soft, lint-free cloth (if necessary with a little clear water) before installation. The LED bonding surface must also be free of grease to ensure good adhesion of the LED strip. Corresponding information can be found in the instructions for the LED strips.

The adhesion of our LEDlight flex strips to the profiles we offer and their different surfaces has been tested and can be ensured if the processing instructions are followed. If there are adhesion problems between LED strips and aluminum profiles, we recommend pre-treatment with the adhesion promoter "3M™ Tape Primer 94".

The guarantee period for the product is 5 years and begins on the day of shipment. Reference is the date of the delivery bill. The guarantee period may differ for accessories.