

# CATania 2525 aluminium profile

- high quality aluminium profile - anodised or black anodised
- flexibly useable as surface-mounted or luminaire profile
- increased light output through integrated reflector
- in combination with the optional reflector stripe the light output can be increased by up to 20 %
- in combination with an opal white cover and compatible LEDlight flex, a homogenous light distribution can be achieved

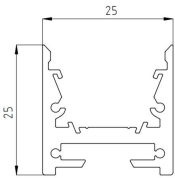


**Please refer to the notes on expansion and assembly at the end of the data sheet!**

## ALUMINIUM PROFILE

	62394211	62394281
<b>Description</b>	aluminium anodized	aluminium black anodized
<b>Colour</b>	nature	black
<b>Length</b>	1000 mm	
<b>Width</b>	25 mm	
<b>Height</b>	25 mm	
<b>Material</b>	Aluminium EN AW 6060	

For other lengths please replace the last digit of the 8-digit article number by: 2 = 2.01m / 3 = 3.02m / 5 = 5.03m



## COVER

	62394231	62394241	62394251
<b>Description</b>	cover clear	cover opal	cover satined
<b>Material</b>	PMMA		
<b>Transmission in %</b>	91	77	84
<b>Length</b>	1000 mm		
<b>Width</b>	23,7 mm		
<b>Height</b>	4,7 mm		

For other lengths please replace the last digit of the article number by: 2 = 2.01m / 3 = 3.02m / 5 = 5.03m

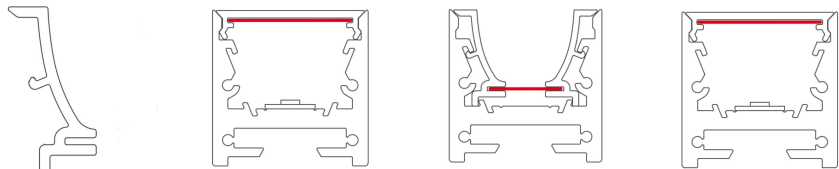


## COVER AS REEL

	62394216	62394217	62394218
<b>Description</b>	cover satined	cover clear	cover opal
<b>Material</b>	PMMA		
<b>Length</b>	20000 mm		
<b>Width</b>	23,7 mm		
<b>Height</b>	4,7 mm		
	only available as a complete 20 m reel		

## FOIL STRIP + INSERT

	62394263	62394270	62394271	62394272
<b>Description</b>	CATania 2525 Einleger "darklight"	CATania 2525 Folienband Glare Control		CATania 2525 Folienband Batwing Prism Film
<b>Material</b>	PMMA	PET		
<b>Length</b>	3020 mm	5000 mm	3000 mm	5000 mm
<b>Width</b>	8,5 mm	19,7 mm	11,5 mm	19,7 mm
<b>Height</b>	15,8 mm	0,35 mm		0,2 mm
<b>Remarks</b>	for glare control of the luminaire (transverse axis) - one insert is required per profile side	zur Entblendung - Einschub in Abdeckung	zur Entblendung - Einschub in Einleger "Darklight"	doppelt asymmetrische Lichtverteilung - Einschub in Abdeckung



## END CAPS

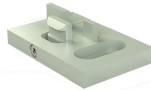
	62394219
<b>Description</b>	2 x CATania end caps incl. 4 screw
<b>Material</b>	aluminium
<b>Colour</b>	nature
<b>Length</b>	25 mm
<b>Width</b>	25 mm
<b>Height</b>	2 mm

Note: The screws for the end caps must be placed and screwed in at a right angle (90°) to the screw channel and may only be screwed in with a max. tightening torque of 0.35 Nm to prevent the screw head from unscrewing or the screw from overtightening (recommended bit PH1).



## MOUNTING CLIPS

	62399908	62399914	62399916
<b>Description</b>	1x vandal-proof mounting, aluminium, anodised, the alu-profile is fixed to the mounting with a hex key	2x brackets, incl. 4 screws, dimensions: 34 x 13 x 5mm, suitable for GARgano, GARliano profile	2x brackets for concrete walls, incl. 4 screws and anchor bolt, suitable for GARgano, Walllight 2.0
<b>Material</b>	aluminium	plastics	
<b>Length</b>	40 mm	34,2 mm	
<b>Width</b>	27 mm	13 mm	
<b>Height</b>	5 mm	5,4 mm	



## ACCESSORIES

	62394220	62394221
<b>Description</b>	reflectortape with a light reflection of >97%, sold by the metre, suitable for CATania profile	
<b>Material</b>	polymer material	
<b>Finish</b>	reflecting	
<b>Colour</b>	white	
<b>Length</b>	10000 mm	1000 mm
<b>Width</b>	11,5 mm	
<b>Height</b>	0,16 mm	
<b>Remarks</b>	Please note that the reflector tape has to be fitted on both sides of the stripe. That means for a 2m luminaire you need 4m reflector tape!	

	40500128	62399919	62399936
<b>Description</b>	suspension for ceiling mounting, metal, nickel-plated, (2x 500 cm wire cable, Ø 1mm, with M4 thread	1x profile connector, incl. locking screws, suitable for GARgano, GARliano, CATania profile	1x profile 90°-connector, incl. 2 locking screws, suitable for GARgano, GARliano profile
<b>Material</b>	steel		
<b>Finish</b>	nickel-plated		galvanized
<b>Colour</b>	silver grey		
<b>Length</b>	5000 mm	45 mm	30,4 mm
<b>Width</b>	1 mm	10 mm	30,4 mm
<b>Height</b>	2 mm		
<b>Diameter</b>	1 mm		



All aluminium profiles and covers are subject to certain length tolerances. This is +20/-0 mm irrespective of the length, i.e. a profile has at least the specified length, but can be up to 20 mm longer.

If you require an exact length, please specify this when ordering (article number 62397000).

Please note that the materials aluminum and PMMA can expand when the temperature changes vary greatly. With a temperature change of 20°C the expansion difference can be up to 1.2 mm per meter! This is no deficiency of the product but a normal physical process.

Installation note: If you directly install two aluminum profiles edge to edge (without end caps), please pay attention during installation, that you don't glue the LED strip directly over the joint, since the profiles at temperature fluctuations - especially at large lengths - will expand/contract (s. section 1) and then the LED tape may be damaged. At joints the LED strip has to be cut at the marked positions and reconnected with flexible solder bridges with corresponding expansion reserve (min. 5mm).

## Intended Use

### Profile:

- The LED profiles are a component for the reception of LED strips approved for this purpose. In combination with optional accessories such as covers, end caps, inserts, etc., LED luminaires can be produced which are used exclusively for general lighting or accent lighting and therefore do not serve emergency or safety lighting in particular.
- The assembly is carried out via appropriate holders or suspensions, which are offered as accessories. For brackets we recommend 3 brackets per running meter. The profiles are designed for mounting on a stable and straight surface. Depending on the substrate and local conditions, a higher number of brackets may be required and/or the installation material supplied (screws/plugs) must be replaced with suitable mounting material. The brackets must not be bent during assembly, as this has an influence on the holding force. It may not be possible to use the holders provided. Alternatively, the profile can be screwed directly to the substrate. In any case, the installer must ensure that the system is held securely.
- Make sure that the profile expands due to thermal influences. Sufficient space must be kept available for this purpose..
- The mounting instructions for the LED strips and power supplies must be viewed separately.
- The profile is to be used exclusively for the above shown installation situations.

### Covers:

- All plastic covers made of PMMA have first-class photometric properties, but are very brittle due to the material, which means that the cover can splinter when subjected to mechanical influences (bending, sawing, other processing). There is a risk of injury, wear safety glasses and gloves! Plastic covers made of PC are not affected.
- PMMA or PC have a higher coefficient of thermal expansion than aluminium. This means that light slits may appear at the joints and terminations of the plastic covers, especially when the unit is not yet at operating temperature..
- To ensure that the cover is held securely, it must be clipped into the holding groove provided for this purpose along its entire length. In any case, the installer must ensure that the system is held securely.
- Alcoholic detergents remove plasticizers from the plastic profiles, which means that they lose their flexibility and can form cracks even when installed. We recommend cleaning only with a damp (clear water), soft cloth.

### Accessories (end caps, holders, etc.):

- An LED profile and its accessories are not toys - these components may only be operated by persons who can assess the risks involved in handling them. There is a danger of swallowing small parts.

## NOTES

Press marks or slight scratches on profiles are production-related and do not constitute a defect.

Loose, wipeable impurities may appear on the aluminum and plastic profiles. This is due to the production and its handling and does not represent a defect. We generally recommend cleaning the profiles with a soft, lint-free cloth (if necessary with a little clear water) before installation. The LED bonding surface must also be free of grease to ensure good adhesion of the LED strip. Corresponding information can be found in the instructions for the LED strips.

The adhesion of our LEDlight flex strips to the profiles we offer and their different surfaces has been tested and can be ensured if the processing instructions are followed. If there are adhesion problems between LED strips and aluminum profiles, we recommend pre-treatment with the adhesion promoter "3M™ Tape Primer 94".

The guarantee period for the product is 5 years and begins on the day of shipment. Reference is the date of the delivery bill. The guarantee period may differ for accessories.