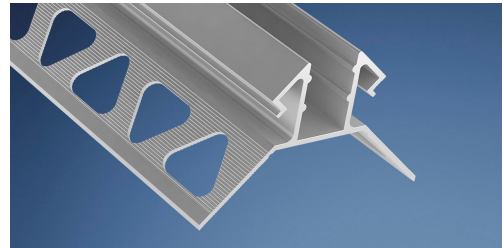


Lugano tile profile with opal cover

for LEDlight flex MFC strips

- high-quality tile corner profile made of anodised aluminium
- for fixed installation in inner or outer corners
- including opal diffuser (polycarbonate)
- suitable for bar helmets LEDlight flex IP66-MFC* strips
- ideal for accentuating corners in wet areas of all kinds, e.g. bathrooms or showers

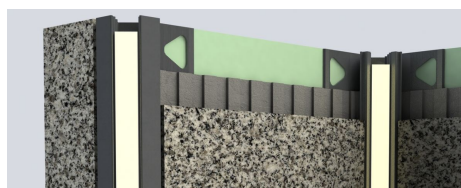
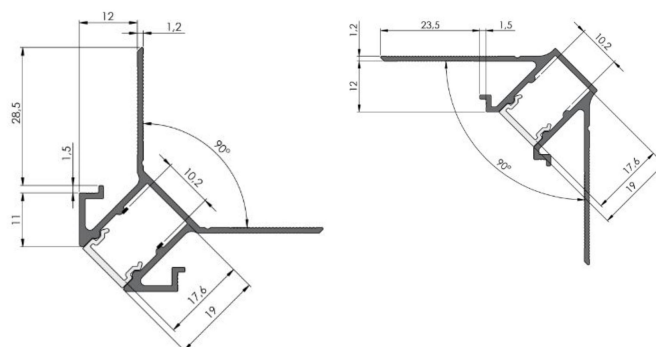


Please refer to the notes on expansion and assembly at the end of the data sheet!

ALUMINIUM PROFILE

	62398162	62398163	62398172	62398173
Description	Corner outside, Tile thickness 10 mm		Corner inside, Tile thickness 10 mm	
Length	2000 mm	3000 mm	2000 mm	3000 mm
Width	53 mm		70 mm	
Height	38 mm		31 mm	
Material	Aluminium 6063			
Finish	anodised			
Weight	796 gr	1194 gr	836 gr	1254 gr
Remarks	incl. opal diffuser			

DIMENSIONED DRAWING



ACCESSORIES

	62398152	62398153
Description	LUGano tile profiles, cover opal white, 10 mm tile, PC	
Material	PC	
Length	2010 mm	3020 mm
Width	11,6 mm	
Height	6,6 mm	
Remarks	für eine homogene und blendfreie Lichtverteilung	

The LEDlight flex IP 66-MFC (= micro film coating) series has a silicone micro coating for protection against dew humidity. This means that applications in environments with increased humidity (e.g. bathrooms and protected outdoor areas) can also be equipped with Barthelme LEDlight flex lighting solutions. Since the MFC tapes, in contrast to the complete encapsulation of the AQUALUC series, have a wafer-thin coating, the LED strip must always be additionally protected by a suitable housing. For use in directly weathered areas, an IP-protected housing must be used. We recommend the use of approved bearded helmets, aluminium profiles as well as suitable covers and end caps. An IP66 test according to DIN EN 60598-1 was carried out for the test. The test specimen is exposed to a strong jet of water from all directions for 3 minutes. In order to achieve the dielectric strength according to DIN EN 60598-1, a suitable housing must also be used. Please note that the IP protective layer is damaged during cutting and soldering. To restore full protection, the cut and solder joints must be resealed. A recommendation of our approved protective lacquers can be found at www.barthelme.de.

All aluminium profiles and covers are subject to certain length tolerances. This is +20/-0 mm irrespective of the length, i.e. a profile has at least the specified length, but can be up to 20 mm longer.

If you require an exact length, please specify this when ordering (article number 62397000).

Please note that the materials aluminum and PC can expand when the temperature changes vary greatly. With a temperature change of 20°C the expansion difference can be up to 1.2 mm per meter! This is no deficiency of the product but a normal physical process.

Installation note: If you directly install two aluminum profiles edge to edge (without end caps), please pay attention during installation, that you don't glue the LED strip directly over the joint, since the profiles at temperature fluctuations - especially at large lengths - will expand/contract (s. section 1) and then the LED tape may be damaged. At joints the LED strip has to be cut at the marked positions and reconnected with flexible solder bridges with corresponding expansion reserve (min. 5mm).

To be urgently observed:

- Before installation, the dimension "10.2mm" must be checked for correctness at at least 3 points (beginning, middle and end of the profile) to rule out transport damage. Tolerance +/-0.2mm (cover installed).
- Ensure that the aluminium profile is installed stress-free.
- Installation in the wall/corner may only be undertaken with the cover installed (pre-assembled).
- The cover may only be deinstalled after the wall/corner has hardened.

Non-observance of these instructions can lead to deformation of the aluminium, so that the luminant can no longer be installed.

NOTE

Press marks or slight scratches on profiles are production-related and do not constitute a defect.