

CATania 6075 luminaire profile

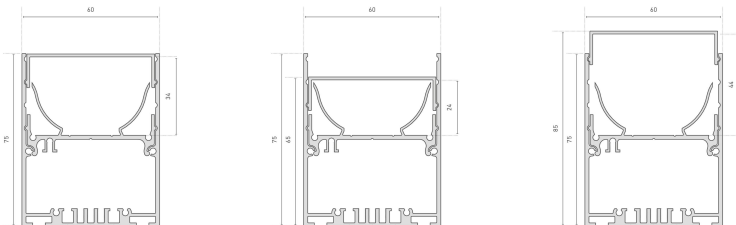
- high quality luminaire aluminium profile, anodised
- flexibly useable as surface-mounted or luminaire profile
- integrateable power supply 66000315
- the cover can be installed in 3 levels (shielded, flush or 180°)
- increased light output through white powder coated reflector integrated in the profile insert
- in combination with an opal white cover and compatible LEDlight flex, a homogenous light distribution can be achieved
- RAL powder coating on request



Please refer to the notes on expansion and assembly at the end of the data sheet!

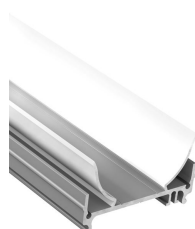
ALUMINIUM PROFILE

	62398861	62398862	62398863	62398865
Length	1000 mm	2010 mm	3020 mm	5030 mm
Width	60 mm			
Height	75 mm			
Material	Aluminium 6063			
Finish	anodised			
Weight	1275 gr	2550 gr	3825 gr	6375 gr



INLAY

	62398871	62398872	62398873	62398875
Description	CATania 60 insert profile, aluminium, anodised, for installation of LED strips of the LEDlight flex series or PCBs according to Zhaga class L28W2 and L56W2; white powder coated reflective surface for increased luminous efficiency			
Length	1000 mm	2010 mm	3020 mm	5030 mm
Width	57,2 mm			
Height	31,6 mm			



COVER

	62398911	62398921	62398931
Description	for the protection of the LED stripe	low light dissipation and hiding technical view at the same time	for a homogenous and antiglare light distribution
Material	PMMA		
Length	1000 mm		
Width	55,8 mm		
Height	15 mm		

For other lengths please replace the last digit of the article number by: 2 = 2.01m / 3 = 3.02m / 5 = 5.03m



END CAPS

	62398866	62398868	62398916
Description	2x end cap, with earthing bolt, incl. Screws, thickness (excl. earthing bolt): 2mm	2x end caps with screwless visible surface, aluminium, anodised, thickness (excl. fixing clips): 2 mm	2x end cap, opal for cover in 180° position, thickness (excl. holding pins): 2mm
Material	Aluminium		Plastics
Length	2 mm		
Width	60 mm		55,8 mm
Height	75 mm		11,9 mm

Note: The screws for the end caps must be placed and screwed in at a right angle (90°) to the screw channel and may only be screwed in with a max. tightening torque of 0.75 Nm to prevent the screw head from unscrewing or the screw from overtightening (recommended bit PH1).



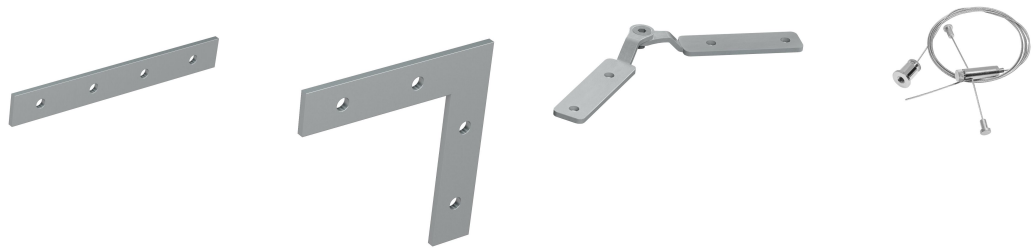
ANGLE BRACKETS

	62398801
Description	2x angle brackets for a 90° wall installation, aluminium, anodised, incl. 1 rounded head screw for attaching the brackets to the profile
Length	30 mm
Width	34 mm
Height	30 mm



ACCESSORIES

	62398802	62398803	62398806	62398876
Description	2x straight connectors, metal, incl. 8 grub screws	2x connectors, 90° angle, metal, incl. 8 grub screws	profile connector set adjustable, 304 stainless steel, 2 pieces, incl. grub screws, for an angled light line	suspension for ceiling mount, metal, nickel-plated, (2x 150 cm wire cable, Ø 1 mm, 2x suspension brackets, 2x Y-profile holder
Material	304 stainless steel			
Length	80 mm	50,5 mm	104 mm	
Width	10,5 mm	50,5 mm	10,5 mm	
Height	1,7 mm		7 mm	
Remarks			for an ascending/descending light line	



	62398878
Description	micro louvre for glare-free lighting of LED luminaires, louvre length: 50 cm, can be arranged next to each other
Material	Aluminium
Colour	silber
Length	500 mm
Width	55,3 mm
Height	31,5 mm
Remarks	Surface: diffuse, finely structured, pre-anodized, ultra-reflective reinforced In combination with LEDlight flex strips with a lumen output of $\leq 2.000\text{lm/m}$ a UGR <19 is achieved (both transverse and longitudinal direction). In conjunction with the end caps 62398868 (screwless visible surface), it must be ensured that the aluminium profile is 5 mm longer than the sum of the parabolic louvres used. With the standard end caps 62398866, the length of the aluminium profile and the parabolic louvre may be the same.



All aluminium profiles and covers are subject to certain length tolerances. This is +20/-0 mm irrespective of the length, i.e. a profile has at least the specified length, but can be up to 20 mm longer.

If you require an exact length, please specify this when ordering (article number 62397000).

Please note that the materials aluminum and PMMA can expand when the temperature changes vary greatly. With a temperature change of 20°C the expansion difference can be up to 1.2 mm per meter! This is no deficiency of the product but a normal physical process.

Installation note: If you directly install two aluminum profiles edge to edge (without end caps), please pay attention during installation, that you don't glue the LED strip directly over the joint, since the profiles at temperature fluctuations - especially at large lengths - will expand/contract (s. section 1) and then the LED tape may be damaged. At joints the LED strip has to be cut at the marked positions and reconnected with flexible solder bridges with corresponding expansion reserve (min. 5mm).

Installation situations



Intended Use

Profile:

- The LED profiles are a component for the reception of LED strips approved for this purpose. In combination with optional accessories such as covers, end caps, inserts, etc., LED luminaires can be produced which are used exclusively for general lighting or accent lighting and therefore do not serve emergency or safety lighting in particular.
- The assembly is carried out via appropriate holders or suspensions, which are offered as accessories. For brackets we recommend 3 brackets per running meter. The profiles are designed for mounting on a stable and straight surface. Depending on the substrate and local conditions, a higher number of brackets may be required and/or the installation material supplied (screws/plugs) must be replaced with suitable mounting material. The brackets must not be bent during assembly, as this has an influence on the holding force. It may not be possible to use the holders provided. Alternatively, the profile can be screwed directly to the substrate. In any case, the installer must ensure that the system is held securely.
- Make sure that the profile expands due to thermal influences. Sufficient space must be kept available for this purpose..
- The mounting instructions for the LED strips and power supplies must be viewed separately.
- The profile is to be used exclusively for the above shown installation situations.

Covers:

- All plastic covers made of PMMA have first-class photometric properties, but are very brittle due to the material, which means that the cover can splinter when subjected to mechanical influences (bending, sawing, other processing). There is a risk of injury, wear safety glasses and gloves! Plastic covers made of PC are not affected.
- PMMA or PC have a higher coefficient of thermal expansion than aluminium. This means that light slits may appear at the joints and terminations of the plastic covers, especially when the unit is not yet at operating temperature..
- To ensure that the cover is held securely, it must be clipped into the holding groove provided for this purpose along its entire length. In any case, the installer must ensure that the system is held securely.
- Alcoholic detergents remove plasticizers from the plastic profiles, which means that they lose their flexibility and can form cracks even when installed. We recommend cleaning only with a damp (clear water), soft cloth.

Accessories (end caps, holders, etc.):

- An LED profile and its accessories are not toys - these components may only be operated by persons who can assess the risks involved in handling them. There is a danger of swallowing small parts.

NOTE

Press marks or slight scratches on profiles are production-related and do not constitute a defect.

The guarantee period for the product is 5 years and begins on the day of shipment.

Reference is the date of the delivery bill. The guarantee period may differ for accessories.