

CATania 6075 luminaire profile

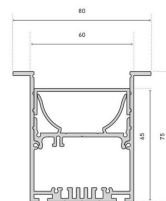
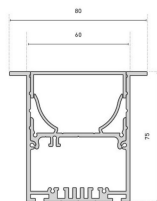
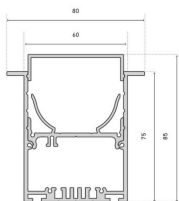
- high quality luminaire aluminium profile, anodised
- flexibly useable as recessed or luminaire profile
- integrateable power supply 66000315
- the cover can be installed in 3 levels (shielded, flush or 180°)
- increased light output through white powder coated reflector integrated in the profile insert
- in combination with an opal white cover and compatible LEDlight flex, a homogenous light distribution can be achieved
- RAL powder coating on request



Please refer to the notes on expansion and assembly at the end of the data sheet!

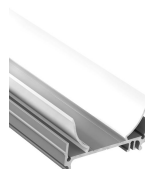
ALUMINIUM PROFILE

	62398891	62398892	62398893	62398895
Description	aluminium anodized			
Colour	aluminium			
Length	1000 mm	2010 mm	3020 mm	5030 mm
Width	80 mm			
Height	75 mm			
Material	Aluminium 6063			



INLAY

	62398871	62398872	62398873	62398875
Description	CATania 60 insert profile, aluminium, anodised, for installation of LEDlight flex series or PCBs according to Zhaga class L28W2 and L56W2; white powder coated reflective surface for increased luminous efficiency			
Material	aluminium			
Finish	teilbeschichtet			
Colour	aluminium			
Length	1000 mm	2010 mm	3020 mm	5030 mm
Width	57,2 mm			
Height	31,6 mm			



COVER

	62398911	62398921	62398931
Description	Diffuser clear, for maximum light yield and protection of the LED strip	Diffuser satined, for a diffused light distribution and concealment of the technology	Diffuser opal, for a homogenous and glare-free light distribution
Material	PMMA		
Version	clear	satined	opal white
Length	1000 mm		
Width	55,8 mm		
Height	15 mm		

For other lengths please replace the last digit of the article number by: 2 = 2.01m / 3 = 3.02m / 5 = 5.03m



END CAPS

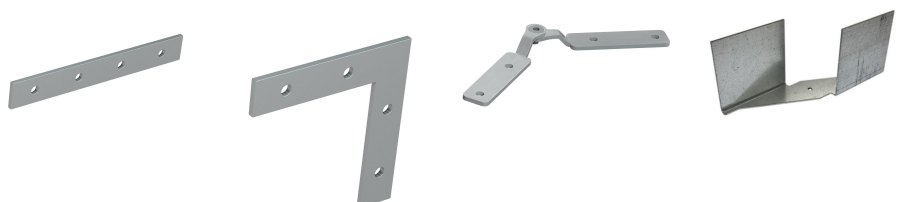
	62398896	62398916
Description	2x end caps, incl. 8 screws, thickness: 12 mm (incl. wings, without earthing screw)	2x end cap, opal for cover in 180° position, thickness (excl. holding pins): 2mm
Material	aluminium	plastics
Colour	aluminium	transparent opalweiß
Length	12 mm	2 mm
Width	80 mm	55,8 mm
Height	75 mm	11,9 mm

Note: The screws for the end caps must be placed and screwed in at a right angle (90°) to the screw channel and may only be screwed in with a max. tightening torque of 0.75 Nm to prevent the screw head from unscrewing or the screw from overtightening (recommended bit PH1).



ACCESSORIES

	62398802	62398803	62398806	62398897
Description	2x straight connectors, metal, incl. 8 grub screws	2x connectors, 90° angle, metal, incl. 8 grub screws	profile connector set adjustable, 304 stainless steel, 2 pieces, incl. grub screws, for an angled light line	2x holding brackets, incl. 2 screws
Material	304 stainless steel			steel
Finish	nut treated			galvanized
Colour	silbergrau			aluminium
Length	80 mm	50,5 mm	104 mm	160 mm
Width	10,5 mm	50,5 mm	10,5 mm	64 mm
Height	1,7 mm		7 mm	67 mm



62398878	
Description	micro louvre for glare-free lighting of LED luminaires, louvre length: 50 cm, can be arranged next to each other
Material	aluminium
Colour	silber
Length	500 mm
Width	55,3 mm
Height	31,5 mm
Remarks	Surface: diffuse, finely structured, pre-anodized, ultra-reflective reinforced In combination with LEDlight flex strips with a lumen output of $\leq 2.000\text{lm/m}$ a UGR <19 is achieved (both transverse and longitudinal direction). In conjunction with the end caps 62398868 (screwless visible surface), it must be ensured that the aluminium profile is 5 mm longer than the sum of the parabolic louvres used. With the standard end caps 62398866, the length of the aluminium profile and the parabolic louvre may be the same.



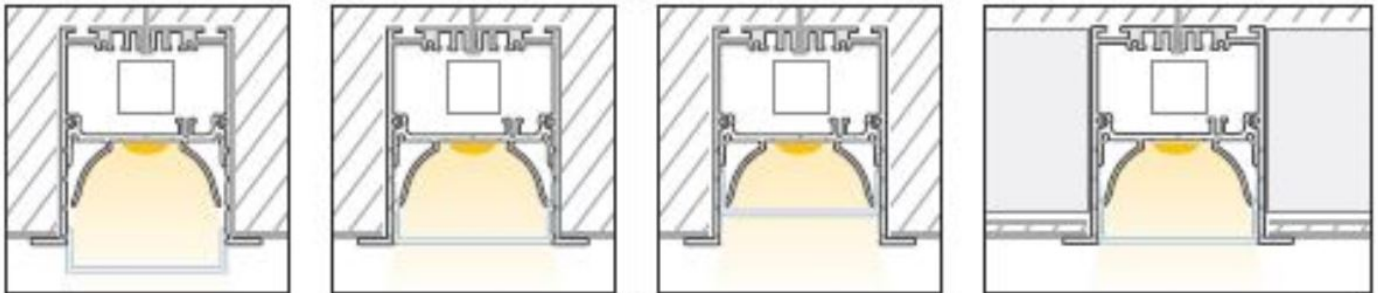
All aluminium profiles and covers are subject to certain length tolerances. This is +20/-0 mm irrespective of the length, i.e. a profile has at least the specified length, but can be up to 20 mm longer.

If you require an exact length, please specify this when ordering (article number 62397000).

Please note that the materials aluminum and PMMA can expand when the temperature changes vary greatly. With a temperature change of 20°C the expansion difference can be up to 1.2 mm per meter! This is no deficiency of the product but a normal physical process.

Installation note: If you directly install two aluminum profiles edge to edge (without end caps), please pay attention during installation, that you don't glue the LED strip directly over the joint, since the profiles at temperature fluctuations - especially at large lengths - will expand/contract (s. section 1) and then the LED tape may be damaged. At joints the LED strip has to be cut at the marked positions and reconnected with flexible solder bridges with corresponding expansion reserve (min. 5mm).

Installation situations



Intended Use

Profile:

- The LED profiles are a component for the reception of LED strips approved for this purpose. In combination with optional accessories such as covers, end caps, inserts, etc., LED luminaires can be produced which are used exclusively for general lighting or accent lighting and therefore do not serve emergency or safety lighting in particular.
- The assembly is carried out via appropriate holders or suspensions, which are offered as accessories. For brackets we recommend 3 brackets per running meter. The profiles are designed for mounting on a stable and straight surface. Depending on the substrate and local conditions, a higher number of brackets may be required and/or the installation material supplied (screws/plugs) must be replaced with suitable mounting material. The brackets must not be bent during assembly, as this has an influence on the holding force. It may not be possible to use the holders provided. Alternatively, the profile can be screwed directly to the substrate. In any case, the installer must ensure that the system is held securely.
- Make sure that the profile expands due to thermal influences. Sufficient space must be kept available for this purpose..

- The mounting instructions for the LED strips and power supplies must be viewed separately.
- The profile is to be used exclusively for the above shown installation situations.

Covers:

- All plastic covers made of PMMA have first-class photometric properties, but are very brittle due to the material, which means that the cover can splinter when subjected to mechanical influences (bending, sawing, other processing). There is a risk of injury, wear safety glasses and gloves! Plastic covers made of PC are not affected.
- PMMA or PC have a higher coefficient of thermal expansion than aluminium. This means that light slits may appear at the joints and terminations of the plastic covers, especially when the unit is not yet at operating temperature..
- To ensure that the cover is held securely, it must be clipped into the holding groove provided for this purpose along its entire length. In any case, the installer must ensure that the system is held securely.
- Alcoholic detergents remove plasticizers from the plastic profiles, which means that they lose their flexibility and can form cracks even when installed. We recommend cleaning only with a damp (clear water), soft cloth.

Accessories (end caps, holders, etc.):

- An LED profile and its accessories are not toys - these components may only be operated by persons who can assess the risks involved in handling them. There is a danger of swallowing small parts.

NOTES

Press marks or slight scratches on profiles are production-related and do not constitute a defect.

Loose, wipeable impurities may appear on the aluminum and plastic profiles. This is due to the production and its handling and does not represent a defect. We generally recommend cleaning the profiles with a soft, lint-free cloth (if necessary with a little clear water) before installation. The LED bonding surface must also be free of grease to ensure good adhesion of the LED strip. Corresponding information can be found in the instructions for the LED strips.

The adhesion of our LEDlight flex strips to the profiles we offer and their different surfaces has been tested and can be ensured if the processing instructions are followed. If there are adhesion problems between LED strips and aluminum profiles, we recommend pre-treatment with the adhesion promoter "3M™ Tape Primer 94".

The guarantee period for the product is 5 years and begins on the day of shipment. Reference is the date of the delivery bill. The guarantee period may differ for accessories.