

BARdolino R mini aluminium profile

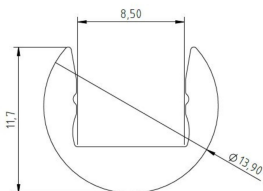
- high-quality aluminium profile, anodised
- smallest, round surface-mounted profile in the assortment
- particularly suitable for use in confined spaces due to its compact dimensions
- with opal white cover and matching LEDlight flex LED strip, a homogeneous light line is possible
- particularly suitable for mounting on shelves
- RAL powder coating on request



Please refer to the notes on expansion and assembly at the end of the data sheet!

ALUMINIUM PROFILE

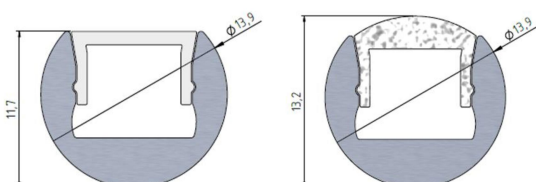
	62399271	62399272	62399273	62399275
Description	aluminium anodized			
Length	1000 mm	2010 mm	3020 mm	5030 mm
Width	13,9 mm			
Height	11,7 mm			
Colour	Aluminium			
Material	Aluminium EN AW 6060			
Finish	anodised			
Weight	173 gr	346 gr	519 gr	865 gr



COVER

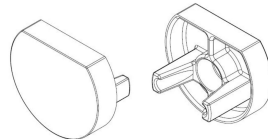
	62399251	62399261	62399281
Description	Diffuser opal, for a homogenous and antiglare light distribution	Diffuser satined, 30° lens for a directed light focus	Diffuser clear, 30° lens for a directed light focus
Material	polycarbonate	PMMA	
Version	opal white	satiniert 30°	klar 30°
Length	1000 mm		
Width	9,4 mm	9,9 mm	
Height	5,5 mm		

For other lengths please replace the last digit of the article number by: 2 = 2.01m / 3 = 3.02m / 5 = 5.03m



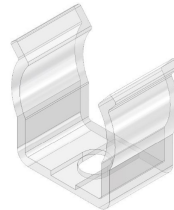
END CAPS

	62399277
Description	BARdolino R mini end cap set, 2 pieces, without boreholes for attaching,
Material	plastics
Colour	silbergrau
Length	7,5 mm
Width	13,9 mm
Height	11,7 mm
Remarks	Material Polyamid 6



MOUNTING CLIPS

	62399276
Description	BARdolino R mini 2x plastic brackets, transparent, incl. 2 screws
Material	polycarbonate
Length	14 mm
Width	14 mm
Height	3 mm
Remarks	Material Polycarbonat; maximum permissible screw-in torque 0.4 Nm



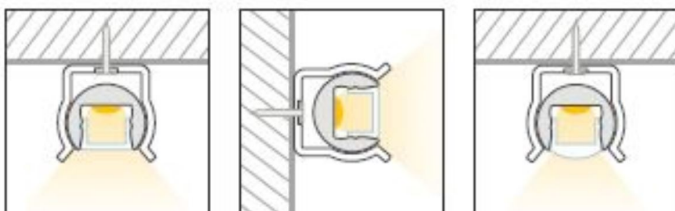
All aluminium profiles and covers are subject to certain length tolerances. This is +20/-0 mm irrespective of the length, i.e. a profile has at least the specified length, but can be up to 20 mm longer.

If you require an exact length, please specify this when ordering (article number 62397000).

Please note that the materials aluminum and PMMA can expand when the temperature changes vary greatly. With a temperature change of 20°C the expansion difference can be up to 1.2 mm per meter! This is no deficiency of the product but a normal physical process.

Installation note: If you directly install two aluminum profiles edge to edge (without end caps), please pay attention during installation, that you don't glue the LED strip directly over the joint, since the profiles at temperature fluctuations - especially at large lengths - will expand/contract (s. section 1) and then the LED tape may be damaged. At joints the LED strip has to be cut at the marked positions and reconnected with flexible solder bridges with corresponding expansion reserve (min. 5mm).

Installation situations



Intended Use

Profile:

- The LED profiles are a component for the reception of LED strips approved for this purpose. In combination with optional accessories such as covers, end caps, inserts, etc., LED luminaires can be produced which are used exclusively for general lighting or accent lighting and therefore do not serve emergency or safety lighting in particular.
- The assembly is carried out via appropriate holders or suspensions, which are offered as accessories. For brackets we recommend 3 brackets per running meter. The profiles are designed for mounting on a stable and straight surface. Depending on the substrate and local conditions, a higher number of brackets may be required and/or the installation material supplied (screws/plugs) must be replaced with suitable mounting material. The brackets must not be bent during assembly, as this has an influence on the holding force. It may not be possible to use the holders provided. Alternatively, the profile can be screwed directly to the substrate. In any case, the installer must ensure that the system is held securely.
- Make sure that the profile expands due to thermal influences. Sufficient space must be kept available for this purpose..
- The mounting instructions for the LED strips and power supplies must be viewed separately.
- The profile is to be used exclusively for the above shown installation situations.

Covers:

- All plastic covers made of PMMA have first-class photometric properties, but are very brittle due to the material, which means that the cover can splinter when subjected to mechanical influences (bending, sawing, other processing). There is a risk of injury, wear safety glasses and gloves! Plastic covers made of PC are not affected.
- PMMA or PC have a higher coefficient of thermal expansion than aluminium. This means that light slits may appear at the joints and terminations of the plastic covers, especially when the unit is not yet at operating temperature..
- To ensure that the cover is held securely, it must be clipped into the holding groove provided for this purpose along its entire length. In any case, the installer must ensure that the system is held securely.
- Alcoholic detergents remove plasticizers from the plastic profiles, which means that they lose their flexibility and can form cracks even when installed. We recommend cleaning only with a damp (clear water), soft cloth.

Accessories (end caps, holders, etc.):

- An LED profile and its accessories are not toys - these components may only be operated by persons who can assess the risks involved in handling them. There is a danger of swallowing small parts.

NOTES

Press marks or slight scratches on profiles are production-related and do not constitute a defect.

In addition, contact points may occur in the middle area of the profiles (>3m) due to anodizing.

Loose, wipeable impurities may appear on the aluminum and plastic profiles. This is due to the production and its handling and does not represent a defect. We generally recommend cleaning the profiles with a soft, lint-free cloth (if necessary with a little clear water) before installation. The LED bonding surface must also be free of grease to ensure good adhesion of the LED strip. Corresponding information can be found in the instructions for the LED strips.

The adhesion of our LEDlight flex strips to the profiles we offer and their different surfaces has been tested and can be ensured if the processing instructions are followed. If there are adhesion problems between LED strips and aluminum profiles, we recommend pre-treatment with the adhesion promoter "3M™ Tape Primer 94".

The guarantee period for the product is 5 years and begins on the day of shipment. Reference is the date of the delivery bill. The guarantee period may differ for accessories.