

# Pino HP aluminium profile

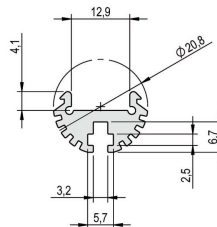
- high quality aluminium profile, anodised
- flexibly useable as surface-mounted or luminaire profile
- round design-build
- with integrated cooling body for LED strips with higher lumen and power output
- with half-round cover for a broad light distribution
- universal mounting via rear-side nut, suitable for M3 nuts
- in combination with an opal white cover and compatible LEDlight flex, a homogenous light distribution can be achieved



Please refer to the notes on expansion and assembly at the end of the data sheet!

## ALUMINIUM PROFILE

	62399431	62399432	62399433	62399435
Description	aluminium anodized			
Length	1000 mm	2010 mm	3020 mm	5030 mm
Width	20,8 mm			
Height	13,2 mm			
Material	aluminium			
Finish	anodised			
Weight	320 gr	640 gr	960 gr	1600 gr



## COVER

	62389961	62396901	62397901	62398901
Description	Diffuser clear, 30° lens for a directed light focus	Diffuser semi-circular, satined, for a diffused light distribution and concealment of the technology	Diffuser semi-circular, opal, for a homogenous and glare-free light distribution	Diffuser semi circular, clear, for maximum light yield and protection of the LED strip
Material	PMMA			
Version	klar 30°	satined	opal white	clear
Length	1000 mm			
Width	20 mm			
Height	10 mm			

For other lengths please replace the last digit of the article number by: 2 = 2.01m / 3 = 3.02m / 5 = 5.03m



## END CAPS

	62399446	62399447	62399448
<b>Description</b>	2x Pino end cap silver	2x Pino end cap clear	2x Pino end caps, aluminium, incl. screws
<b>Material</b>	plastics		aluminium
<b>Colour</b>	silver	transparent	Aluminium
<b>Length</b>	2 mm		

Note: The screws for the end caps must be placed and screwed in at a right angle (90°) to the screw channel and may only be screwed in with a max. tightening torque of 0.35 Nm to prevent the screw head from unscrewing or the screw from overtightening (recommended bit PH1).



## MOUNTING CLIPS

	50990191	62399437
<b>Description</b>	2x mounting clips pivoted, incl. screws, suitable for profiles of the BARDolino family	2x mounting clips, 2 screws, suitable for profiles of the Pino family
<b>Material</b>	304 stainless steel	steel
<b>Length</b>	18,8 mm	10 mm
<b>Width</b>	32,3 mm	19,4 mm
<b>Height</b>	22,4 mm	22,8 mm



## ACCESSORIES

	62399438	62399487	62399488	62399489	65300160
<b>Description</b>	mounting clip, profile groove incl. mounting accessories, for mounting bracket and cantilever, suitable for Pino HP	mounting bracket standard, for mounting in ceiling and floor, incl. 2 screws and 2 dowels, distance to wall 15 mm	cantilever arm, for mounting on walls, incl. 2 screws and 2 dowels, distance to wall 65 mm	cantilever arm long, for mounting on walls, incl. 2 screws and 2 dowels, distance to wall 201 mm	suspension for ceiling installation (2x 150cm wire cable Ø 1mm with M3 thread, 2x suspension brackets) incl. screw nuts
<b>Material</b>	304 stainless steel				various
<b>Length</b>	82 mm	73,7 mm	71,4 mm	206,3 mm	1500 mm
<b>Width</b>	11 mm	58 mm			1 mm
<b>Height</b>	17 mm	20,4 mm	55,5 mm	85,5 mm	1 mm
<b>Remarks</b>		Mounting bracket V2A steel, nylon dowel, spacer sleeve brass nickel plated, screws, washers, snorkel washer, nut			For mounting an additional holder set 62399934 is required for each suspension set.



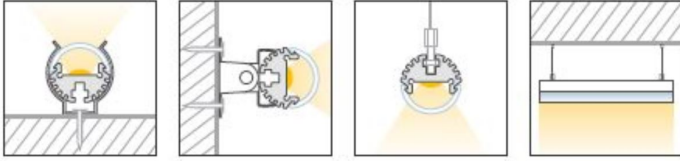
All aluminium profiles and covers are subject to certain length tolerances. This is +20/-0 mm irrespective of the length, i.e. a profile has at least the specified length, but can be up to 20 mm longer.

If you require an exact length, please specify this when ordering (article number 62397000).

Please note that the materials aluminum and PMMA can expand when the temperature changes vary greatly. With a temperature change of 20°C the expansion difference can be up to 1.2 mm per meter! This is no deficiency of the product but a normal physical process.

Installation note: If you directly install two aluminum profiles edge to edge (without end caps), please pay attention during installation, that you don't glue the LED strip directly over the joint, since the profiles at temperature fluctuations - especially at large lengths - will expand/contract (s. section 1) and then the LED tape may be damaged. At joints the LED strip has to be cut at the marked positions and reconnected with flexible solder bridges with corresponding expansion reserve (min. 5mm).

## Installation situations



## Intended Use

### Profile:

- The LED profiles are a component for the reception of LED strips approved for this purpose. In combination with optional accessories such as covers, end caps, inserts, etc., LED luminaires can be produced which are used exclusively for general lighting or accent lighting and therefore do not serve emergency or safety lighting in particular.
- The assembly is carried out via appropriate holders or suspensions, which are offered as accessories. For brackets we recommend 3 brackets per running meter. The profiles are designed for mounting on a stable and straight surface. Depending on the substrate and local conditions, a higher number of brackets may be required and/or the installation material supplied (screws/plugs) must be replaced with suitable mounting material. The brackets must not be bent during assembly, as this has an influence on the holding force. It may not be possible to use the holders provided. Alternatively, the profile can be screwed directly to the substrate. In any case, the installer must ensure that the system is held securely.
- Make sure that the profile expands due to thermal influences. Sufficient space must be kept available for this purpose..
- The mounting instructions for the LED strips and power supplies must be viewed separately.
- The profile is to be used exclusively for the above shown installation situations.

### Covers:

- All plastic covers made of PMMA have first-class photometric properties, but are very brittle due to the material, which means that the cover can splinter when subjected to mechanical influences (bending, sawing, other processing). There is a risk of injury, wear safety glasses and gloves! Plastic covers made of PC are not affected.
- PMMA or PC have a higher coefficient of thermal expansion than aluminium. This means that light slits may appear at the joints and terminations of the plastic covers, especially when the unit is not yet at operating temperature..
- To ensure that the cover is held securely, it must be clipped into the holding groove provided for this purpose along its entire length. In any case, the installer must ensure that the system is held securely.
- Alcoholic detergents remove plasticizers from the plastic profiles, which means that they lose their flexibility and can form cracks even when installed. We recommend cleaning only with a damp (clear water), soft cloth.

### Accessories (end caps, holders, etc.):

- An LED profile and its accessories are not toys - these components may only be operated by persons who can assess the risks involved in handling them. There is a danger of swallowing small parts.

## NOTES

Press marks or slight scratches on profiles are production-related and do not constitute a defect.

Loose, wipeable impurities may appear on the aluminum and plastic profiles. This is due to the production and its handling and does not represent a defect. We generally recommend cleaning the profiles with a soft, lint-free cloth (if necessary with a little clear water) before installation. The LED bonding surface must also be free of grease to ensure good adhesion of the LED strip. Corresponding information can be found in the instructions for the LED strips.

The adhesion of our LEDlight flex strips to the profiles we offer and their different surfaces has been tested and can be ensured if the processing instructions are followed. If there are adhesion problems between LED strips and aluminum profiles, we recommend pre-treatment with the adhesion promoter "3M™ Tape Primer 94".

The guarantee period for the product is 5 years and begins on the day of shipment. Reference is the date of the delivery bill. The guarantee period may differ for accessories.