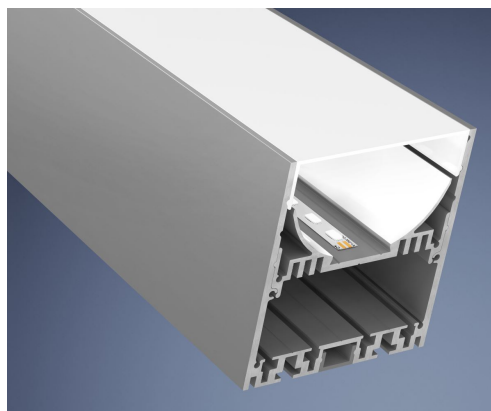


CATania 8090 luminaire profile

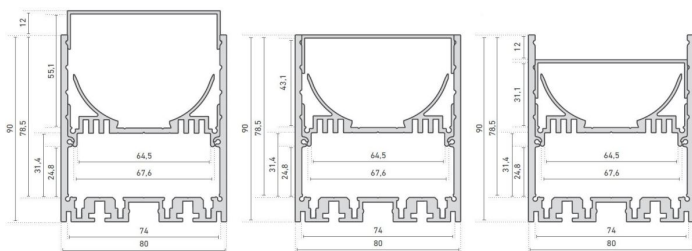
- high quality luminaire aluminium profile, anodised
- for mounting of very high performance LED strips or boards
- indirect illumination possible on the rear side of the profile
- integrateable power supply 66000315
- the cover can be installed in 3 levels (shielded, flush or 180°)
- increased light output through white powder coated reflector integrated in the profile insert
- extended accessories available for luminaire assembly
- in combination with an opal white cover and compatible LEDlight flex, a homogenous light distribution can be achieved
- RAL powder coating on request



Please refer to the notes on expansion and assembly at the end of the data sheet!

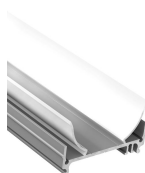
ALUMINIUM PROFILE

	62399741	62399742	62399743	62399745
Description	aluminium anodized			
Length	1000 mm	2010 mm	3020 mm	5030 mm
Width	80 mm			
Height	90 mm			
Material	Aluminium 6063			



INLAY

	62399781	62399782	62399783	62399785
Description	CATania 80 insert profile, aluminium, anodised, for installation of LED strips or PCBs according to Zhaga class L28W2 and L56W2; white powder coated reflective surface for increased luminous efficiency			
Material	aluminium			
Finish	powder-coated			
Colour	aluminium + weiss			
Length	1000 mm	2010 mm	3020 mm	5030 mm
Width	74 mm			
Height	35,5 mm			



COVER

	62399751	62399761	62399771
Description	Diffuser clear, for maximum light yield and protection of the LED strip	Diffuser satined, for a diffused light distribution and concealment of the technology	Diffuser opal, for a homogenous and glare-free light distribution
Material	PMMA		
Version	clear	satined	opal white
Length	1000 mm		
Width	73,9 mm		
Height	18,5 mm		

For other lengths please replace the last digit of the article number by: 2 = 2.01m / 3 = 3.02m / 5 = 5.03m



END CAPS

	62399747	62399748
Description	2x end caps, aluminium, anodised, thickness: 2 mm, incl. Screws	2x end caps with screwless visible surface, aluminium, anodised, thickness (excl. fixing clips): 2 mm
Material	aluminium	
Colour	aluminium	
Length	3 mm	12 mm
Width	80 mm	
Height	90 mm	

Note: The screws for the end caps must be placed and screwed in at a right angle (90°) to the screw channel and may only be screwed in with a max. tightening torque of 0.75 Nm to prevent the screw head from unscrewing or the screw from overtightening (recommended bit PH1).



ANGLE BRACKETS

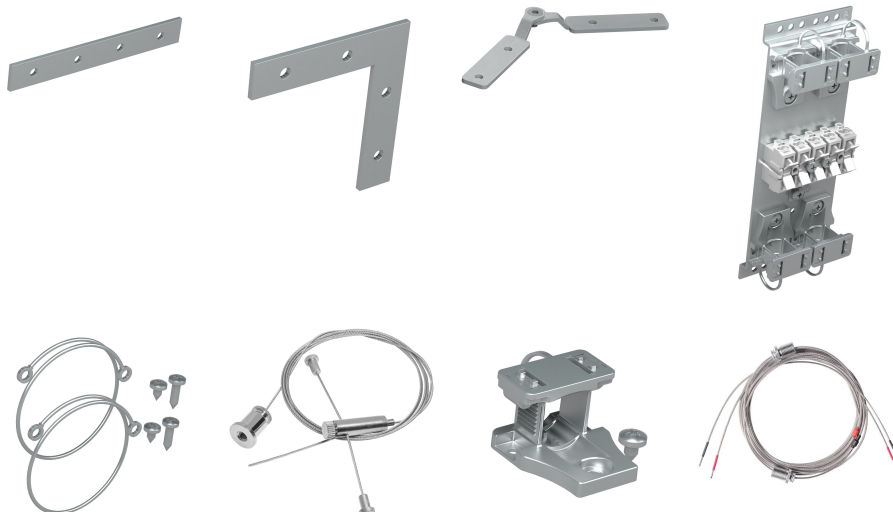
	62398801
Description	2x angle brackets for a 90° wall installation, aluminium, anodised, incl. 1 rounded head screw for attaching the brackets to the profile
Material	aluminium
Length	30 mm
Width	34 mm
Height	30 mm



ACCESSORIES

	62398802	62398803	62398806	62399786
Description	2x straight connectors, metal, incl. 8 grub screws	2x connectors, 90° angle, metal, incl. 8 grub screws	profile connector set adjustable, 304 stainless steel, 2 pieces, incl. grub screws, for an angled light line	1x connecting terminal, metal, with strain relief and clamps
Material	304 stainless steel			various
Finish	nut treated			
Colour	silbergrau			silber
Length	80 mm	50,5 mm	104 mm	150 mm
Width	10,5 mm	50,5 mm	10,5 mm	55 mm
Height	1,7 mm		7 mm	28 mm
Remarks				Kabel Nennquerschnitt 2,5mm ²

	62398804	62398876	62399787	62399788
Description	2x cable safeguard for CATania insert profiles, length 20 cm, incl. 4 screws	suspension for ceiling mount, metal, nickel-plated, (2x 150 cm wire cable, Ø 1 mm, 2x suspension brackets, 2x Y-profile holder	strain relief for cable Ø 5-12 mm, plastic, incl. fixing screw	Voltage-carrying wire suspension
Material	stainless steel	aluminium		
Finish	nut treated	chrome-plated	chrome-plated	
Colour	silber			chrom
Length	170 mm		31,2 mm	1500 mm
Width	100 mm		26,8 mm	
Height	5 mm	16 mm	16,7 mm	
Remarks				working load 4kg per rope, copper section 0,5mm ² , max. 4,5A, metal chrome matt, diameter rope 1,5mm, 2x 2,3m wire ropes, 4x profile holders, for realization of a pendant light with canopy



All aluminium profiles and covers are subject to certain length tolerances. This is +20/-0 mm irrespective of the length, i.e. a profile has at least the specified length, but can be up to 20 mm longer.

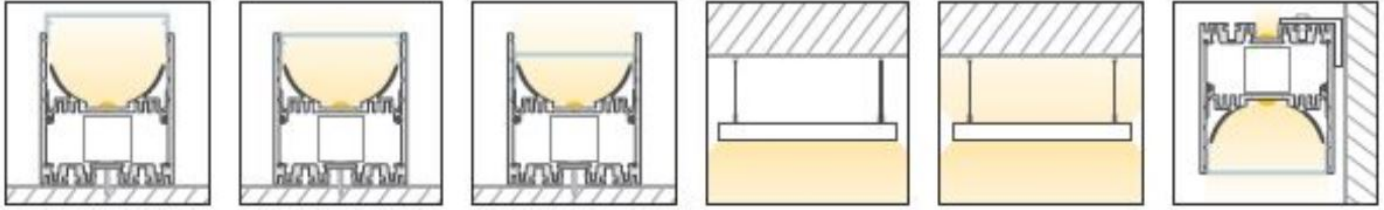
If you require an exact length, please specify this when ordering (article number 62397000).

Please note that the materials aluminum and PMMA can expand when the temperature changes vary greatly. With a temperature change of 20°C the expansion difference can be up to 1.2 mm per meter! This is no deficiency of the product but a normal physical process.

Installation note: If you directly install two aluminum profiles edge to edge (without end caps), please pay attention during installation, that you don't glue the LED strip directly over the joint, since the profiles at temperature fluctuations - especially at large lengths - will expand/contract (s. section 1) and

then the LED tape may be damaged. At joints the LED strip has to be cut at the marked positions and reconnected with flexible solder bridges with corresponding expansion reserve (min. 5mm).

Installation situations



Intended Use

Profile:

- The LED profiles are a component for the reception of LED strips approved for this purpose. In combination with optional accessories such as covers, end caps, inserts, etc., LED luminaires can be produced which are used exclusively for general lighting or accent lighting and therefore do not serve emergency or safety lighting in particular.
- The assembly is carried out via appropriate holders or suspensions, which are offered as accessories. For brackets we recommend 3 brackets per running meter. The profiles are designed for mounting on a stable and straight surface. Depending on the substrate and local conditions, a higher number of brackets may be required and/or the installation material supplied (screws/plugs) must be replaced with suitable mounting material. The brackets must not be bent during assembly, as this has an influence on the holding force. It may not be possible to use the holders provided. Alternatively, the profile can be screwed directly to the substrate. In any case, the installer must ensure that the system is held securely.
- Make sure that the profile expands due to thermal influences. Sufficient space must be kept available for this purpose..
- The mounting instructions for the LED strips and power supplies must be viewed separately.
- The profile is to be used exclusively for the above shown installation situations.

Covers:

- All plastic covers made of PMMA have first-class photometric properties, but are very brittle due to the material, which means that the cover can splinter when subjected to mechanical influences (bending, sawing, other processing). There is a risk of injury, wear safety glasses and gloves! Plastic covers made of PC are not affected.
- PMMA or PC have a higher coefficient of thermal expansion than aluminium. This means that light slits may appear at the joints and terminations of the plastic covers, especially when the unit is not yet at operating temperature..
- To ensure that the cover is held securely, it must be clipped into the holding groove provided for this purpose along its entire length. In any case, the installer must ensure that the system is held securely.
- Alcoholic detergents remove plasticizers from the plastic profiles, which means that they lose their flexibility and can form cracks even when installed. We recommend cleaning only with a damp (clear water), soft cloth.

Accessories (end caps, holders, etc.):

- An LED profile and its accessories are not toys - these components may only be operated by persons who can assess the risks involved in handling them. There is a danger of swallowing small parts.

NOTES

Press marks or slight scratches on profiles are production-related and do not constitute a defect.

Loose, wipeable impurities may appear on the aluminum and plastic profiles. This is due to the production and its handling and does not represent a defect. We generally recommend cleaning the profiles with a soft, lint-free cloth (if necessary with a little clear water) before installation. The LED bonding surface must also be free of grease to ensure good adhesion of the LED strip. Corresponding information can be found in the instructions for the LED strips.

The adhesion of our LEDlight flex strips to the profiles we offer and their different surfaces has been tested and can be ensured if the processing instructions are followed. If there are adhesion problems between LED strips and aluminum profiles, we recommend pre-treatment with the adhesion promoter "3M™ Tape Primer 94".

The guarantee period for the product is 5 years and begins on the day of shipment. Reference is the date of the delivery bill. The guarantee period may differ for accessories.