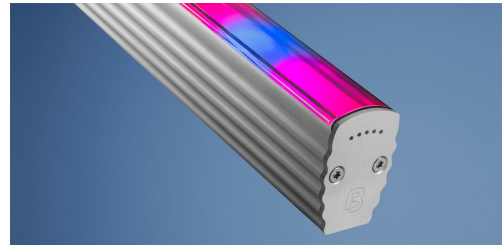


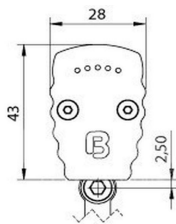
# BERgamo HP Plant Light

## Linear Luminaire

- temperature control protects the LEDs from overheating
- linear construction - perfect for plant bed lighting
- 50% more efficient than conventional plant growth lights (HPS)
- 5x longer lifetime compared to conventional plant growth lights (HPS)  
 12 kh vs > 60 kh LED)
- IP 65 protection for the outdoor applications
- passive cooling
- Aluminium anodised EN AW6060; E6/C0 (EV1)
- incl. 5 m connection cable with free wire ends
- without mounting bracked and cantilever arm



### LATERAL VIEW



### LIGHT DATA

	64334060	64664060	64984060
CV/CC	CV		
Typ. wavelength	660 nm;450 nm		
Max. power	22 W	44 W	66 W
Typ. photosynthetic photon flux	52 µmol/s	104 µmol/s	156 µmol/s
Typ. PPF per joule	2,4 µmol/J		
Beam angle	80 °		
Type of protection	IP 65		
Indoor	Outdoor		
Energy efficiency class	B		

### POWER DATA

	64334060	64664060	64984060
Constant voltage/Constant current	CV		
Operating voltage	24 V DC		
Typ. current consumption	920 mA	1,83 A	2,75 A
Typ. power	22 W	44 W	66 W

## FURTHER DATA

	64334060	64664060	64984060
<b>Material</b>		Aluminium	
<b>Finish</b>		anodised	
<b>Color of material</b>		aluminium	
<b>Type of protection</b>		IP 65	
<b>Indoor/Outdoor</b>		Outdoor	
<b>Umgebungstemperatur Ta max</b>		55 ° C	
<b>Width</b>		28 mm	
<b>Height</b>		43 mm	
<b>Weight</b>	350 gr	700 gr	1050 gr
<b>Cable length/cable finishing</b>	5m cable with free wire ends		
<b>Remarks</b>	Impact resistance: IK10 without mounting bracket and cantilever arm		

Maximum values at Ta=25°C

## ACCESSORIES

	62399487	62399488	62399489
<b>Description</b>	mounting bracket standard, for mounting in ceiling and floor, incl. 2 screws and 2 dowels, distance to wall 15 mm	cantilever arm, for mounting on walls, incl. 2 screws and 2 dowels, distance to wall 65 mm	cantilever arm long, for mounting on walls, incl. 2 screws and 2 dowels, distance to wall 201 mm
<b>Material</b>	304 stainless steel		
<b>Length</b>	73,7 mm	71,4 mm	206,3 mm
<b>Width</b>	58 mm		
<b>Height</b>	20,4 mm	55,5 mm	85,5 mm
<b>Remarks</b>	Mounting bracket V2A steel, nylon dowel, spacer sleeve brass nickel plated, screws, washers, snorkel washer, nut		

