

AQUALUC W:AVE Accessories

For W:AVE with outer dimensions 17.5 x 17.5 mm

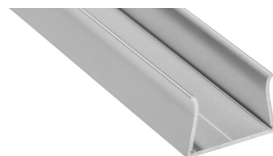
You have various possibilities to secure the AQUALUC. Either with support profiles for linear lines or using retaining brackets, double-sided adhesive tape or construction glue for flexible installations.

The mounting profile 40500027/40500028 enables the AQUALUC to expand linearly, as it is not clamped in the profile but only held by it ("floating"). **Expansion and compression of the Aqualuc** due to self-heating and larger temperature differences during installation outdoors **are thus minimised, which has a positive effect on the service life.**

Please observe the installation and safety instructions at <https://www.barthelme.de/content/en/manuals.aspx> !

MOUNTING PROFILES

	40500023	40500024	40500027	40500028
Description	AQUALUC W:AVE (17,5 x 17,5 mm) aluminium mounting profile, anodised	AQUALUC W:AVE (17,5 x 17,5 mm) aluminium mounting profile 2.0, anodised	AQUALUC W:AVE (17,5 x 17,5 mm); not gripping mounting profile, aluminium, anodized	
Material	Aluminium 6063			
Length	1000 mm	2000 mm		3000 mm
Width	22,8 mm		22,1 mm	
Height	15 mm		23,4 mm	
Remarks	Also suitable for AQUALUC C:URVE WIDE. The AQUALUC must not be mounted over joints. It is therefore recommended that when using the mounting profiles AQUALUC length in cm < holding profile length in one piece.		also suitable for AQUALUC C:URVE WIDE. The Aqualuc is enclosed and can move freely. Strain and compression of the light line are avoided in the event of temperature fluctuations.	



	40500061	40500062
Description	AQUALUC W:AVE (17.5 x 17.5 mm) mounting profile, PC plastic, UV resistant	
Material	PC	
Length	1000 mm	2000 mm
Width	22,8 mm	
Height	15 mm	
Remarks	also suitable for AQUALUC C:URVE WIDE	



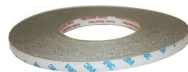
BRACKETS

	40500025	40500026
Description	AQUALUC W:AVE (17,5 x 17,5 mm) aluminium bracket set, 10 pieces 5 cm, 10 screws, 10 dowels	AQUALUC W:AVE (17,5 x 17,5 mm) bracket set, 10 pieces stainless steel 316L, 10 screws, 10 dowels
Material	Aluminium	316L stainless steel
Length	50 mm	20 mm
Width	22,8 mm	19,5 mm
Height	15 mm	15,5 mm
Remarks	also for AQUALUC C:URVE WIDE, hole diameter 2.9 mm	also for AQUALUC C:URVE WIDE, hole diameter 6 mm



ACCESSORIES

	30033019	40100111	63500024	63500033
Description	heat resistant double-sided tape, with excellent adhesive properties	dismounting tool, minimizes the mechanical stress on the product when removing	Technical Vaseline, high purity, chemically neutral, 80 g tube, suitable for all mounting profiles	Silicone adhesive and sealant, one-component, transparent, cartridge 290 ml
Material	Acryl	Poly lactide PLA		
Length	33000 mm	210 mm		
Width	9 mm	8 mm		
Height	0,4 mm	62 mm		
Remarks	33 m x 9 mm		For the assembly of the AQUALUC absolutely recommended	not suitable for PC-plastic profiles



NOTE

Press marks or slight scratches on profiles are production-related and do not constitute a defect.