

AQUALUC W:AVE Accessories

For W:AVE with outer dimensions 13.5 x 13.5 mm

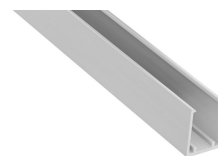
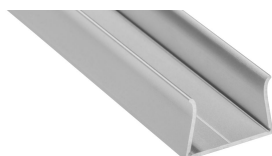
You have various possibilities to secure the AQUALUC. Either with support profiles for linear lines or using retaining brackets, double-sided adhesive tape or construction glue for flexible installations.

The mounting profile 40500017/40500018 enables the AQUALUC to expand linearly, as it is not clamped in the profile but only held by it ("floating"). **Expansion and compression of the Aqualuc** due to self-heating and larger temperature differences during installation outdoors **are thus minimised, which has a positive effect on the service life.**

Please observe the installation and safety instructions at <https://www.barthelme.de/content/en/manuals.aspx> !

MOUNTING PROFILES

	40500013	40500014	40500017	40500018
Description	AQUALUC W:AVE (13,5 x 13,5 mm) aluminium mounting profile, anodised		AQUALUC W:AVE (13,5 x 13,5 mm); not gripping mounting profile, aluminium, anodized	
Material	Aluminium 6063			
Length	1000 mm	2000 mm		3000 mm
Width	19 mm		18,1 mm	
Height	13 mm		19,4 mm	
Remarks	The AQUALUC must not be mounted over joints. It is therefore recommended that when using the mounting profiles AQUALUC length in cm < holding profile length in one piece.		The Aqualuc is enclosed and can move freely. Strain and compression of the light line are avoided in the event of temperature fluctuations.	



	40500051	40500052	40500091	40500092
Description	AQUALUC W:AVE (13.5 x 13.5 mm) mounting profile, PC plastic, UV resistant		AQUALUC W:AVE (13.5 x 13.5 mm) mounting profile with fixing wing, aluminium, anodised	
Material	Plastics		Aluminium 6063	
Length	1000 mm	2000 mm	1000 mm	2000 mm
Width	19 mm		31 mm	
Height	13 mm			



BRACKETS

	40500015	40500016
Description	AQUALUC W:AVE (13,5 x 13,5 mm) aluminium bracket set, 10 pieces 5 cm, 10 screws, 10 dowels	AQUALUC W:AVE (13,5 x 13,5 mm) bracket set, 10 pieces stainless steel 316L, 10 screws, 10 dowels
Material	Aluminium 6063	316L stainless steel
Length	50 mm	20 mm
Width	19 mm	15,5 mm
Height	13 mm	11,5 mm
Remarks	hole diameter 2.9 mm	hole diameter 6 mm



ACCESSORIES

	30033019	40100111	63500024	63500033
Description	heat resistant double-sided tape, with excellent adhesive properties	dismounting tool, minimizes the mechanical stress on the product when removing	Technical Vaseline, high purity, chemically neutral, 80 g tube, suitable for all mounting profiles	Silicone adhesive and sealant, one-component, transparent, cartridge 290 ml
Material	Acryl	Poly lactide PLA		
Length	33000 mm	210 mm		
Width	9 mm	8 mm		
Height	0,4 mm	62 mm		
Remarks	33 m x 9 mm		For the assembly of the AQUALUC absolutely recommended	not suitable for PC-plastic profiles



NOTE

Press marks or slight scratches on profiles are production-related and do not constitute a defect.