

# AQUALUC W:AVE Accessories

For W:AVE with outer dimensions 17.5 x 17.5 mm

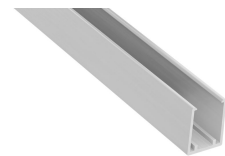
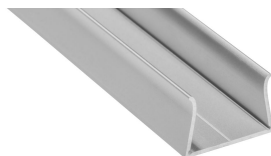
You have various possibilities to secure the AQUALUC. Either with support profiles for linear lines or using retaining brackets, double-sided adhesive tape or construction glue for flexible installations.

The mounting profile 40500027/40500028 enables the AQUALUC to expand linearly, as it is not clamped in the profile but only held by it ("floating"). **Expansion and compression of the Aqualuc** due to self-heating and larger temperature differences during installation outdoors **are thus minimised, which has a positive effect on the service life.**

**Please observe the installation and safety instructions at <https://www.barthelme.de/content/en/manuals.aspx> !**

## MOUNTING PROFILES

	40500023	40500024	40500027	40500028
<b>Description</b>	AQUALUC W:AVE (17,5 x 17,5 mm) aluminium mounting profile, anodised	AQUALUC W:AVE (17,5 x 17,5 mm) aluminium mounting profile 2.0, anodised	AQUALUC W:AVE (17,5 x 17,5 mm); not gripping mounting profile, aluminium, anodized	
<b>Material</b>	Aluminium 6063			
<b>Length</b>	1000 mm	2000 mm		3000 mm
<b>Width</b>	22,8 mm		22,1 mm	
<b>Height</b>	15 mm		23,4 mm	
<b>Remarks</b>	Also suitable for AQUALUC C:URVE WIDE. The AQUALUC must not be mounted over joints. It is therefore recommended that when using the mounting profiles AQUALUC length in cm < holding profile length in one piece.		also suitable for AQUALUC C:URVE WIDE The Aqualuc is enclosed and can move freely. Strain and compression of the light line are avoided in the event of temperature fluctuations.	



	40500061	40500062
<b>Description</b>	AQUALUC W:AVE (17.5 x 17.5 mm) mounting profile, PC plastic, UV resistant	
<b>Material</b>	PC	
<b>Length</b>	1000 mm	2000 mm
<b>Width</b>	22,8 mm	
<b>Height</b>	15 mm	
<b>Remarks</b>	also suitable for AQUALUC C:URVE WIDE	



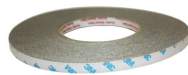
## BRACKETS

	<b>40500025</b>	<b>40500026</b>
<b>Description</b>	AQUALUC W:AVE (17,5 x 17,5 mm) aluminium bracket set, 10 pieces 5 cm, 10 screws, 10 dowels	AQUALUC W:AVE (17,5 x 17,5 mm) bracket set, 10 pieces stainless steel 316L, 10 screws, 10 dowels
<b>Material</b>	Aluminium	316L stainless steel
<b>Length</b>	50 mm	20 mm
<b>Width</b>	22,8 mm	19,5 mm
<b>Height</b>	15 mm	15,5 mm
<b>Remarks</b>	also for AQUALUC C:URVE WIDE, hole diameter 2.9 mm	also for AQUALUC C:URVE WIDE, hole diameter 6 mm



## ACCESSORIES

	<b>30033009</b>	<b>40100111</b>	<b>63500020</b>	<b>63500030</b>
<b>Description</b>	heat resistant double-sided tape, with excellent adhesive properties	dismounting tool, minimizes the mechanical stress on the product when removing	technical vaseline, high-purity, chemically neutral, 100 ml can, for use with all mounting profiles	construction one component glue, firm-elastic, white, cartridge 290ml
<b>Material</b>	Acryl	Poly lactide PLA		1K-Hybrid-Polymer
<b>Length</b>	33000 mm	210 mm		
<b>Width</b>	9 mm	8 mm		
<b>Height</b>	0,4 mm	62 mm		
<b>Remarks</b>	33 m x 9 mm		For mounting AQUALUC strictly recommended	see separate data sheet



## NOTE

Press marks or slight scratches on profiles are production-related and do not constitute a defect.