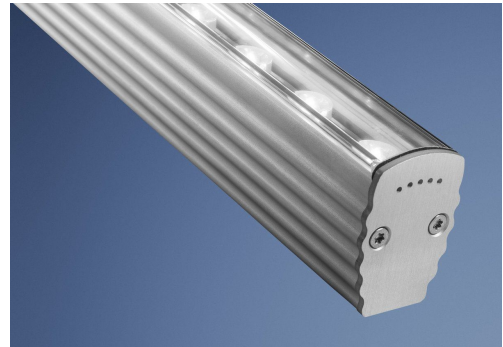


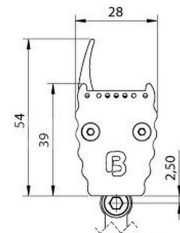
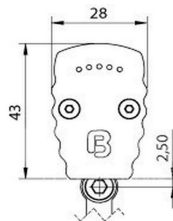
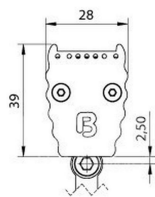
BERgamo HP

Linear Luminaire - anodised aluminium - Light colour white -
Length 996mm - Indoor

- elegant wallwasher with high lumen output for indoor and outdoor architectural area illumination
- seamless and shadowless alignment possible, several luminaires operable with one controller
- Impact resistance: IK10
- Temperature monitoring. Automatic dimming of the LEDs in the case of overheating to protect from damage
- anodised aluminium housing, coloured eloxal on request
- indoor: optionally with a straight plastic cover – with or without glare shield - or with a half-round cover for special protection against dust and dirt



LATERAL VIEW OF THE THREE VARIETIES



LIGHT DATA

| | 62982617 | 62982626 | 62982637 | 62982655 | 62982817 | 62982826 | 62982837 | 62982855 | 62983317 | 62983326 | 62983337 | 62983355 |
|-----------------------------------|------------|----------|----------|----------|------------|----------|----------|----------|----------|----------|----------|----------|
| dimmable | dimmable | | | | | | | | | | | |
| | 63982617 | 63982626 | 63982637 | 63982655 | 63982817 | 63982826 | 63982837 | 63982855 | 63983317 | 63983326 | 63983337 | 63983355 |
| | 64982617 | 64982626 | 64982637 | 64982655 | 64982817 | 64982826 | 64982837 | 64982855 | 64983317 | 64983326 | 64983337 | 64983355 |
| Typ. color temperature | 4000 K | | | | 2700 K | | | | 3000 K | | | |
| Light color | cold white | | | | warm white | | | | white | | | |
| LED beam angle | 17 ° | 26 ° | 37 ° | 43x16 ° | 17 ° | 26 ° | 37 ° | 43x16 ° | 17 ° | 26 ° | 37 ° | 43x16 ° |
| Typ. luminous flux | 5940 lm | | | | 5340 lm | | | | 5640 lm | | | |
| Efficiency | 110 lm/W | | | | 99 lm/W | | | | 104 lm/W | | | |
| Energy efficiency class | A+ | | | | | | | | | | | |
| Typ. color rendering index | 83 | | | | | | | | | | | |
| SDCM MacAdam | 3 | | | | | | | | | | | |
| Number of LEDs | 36 | | | | | | | | | | | |

POWER DATA

| | 64982617 | 64982626 | 64982637 | 64982655 | 64982817 | 64982826 | 64982837 | 64982855 | 64983317 | 64983326 | 64983337 | 64983355 |
|-----------------------------------|----------|----------|----------|----------|----------|----------|----------|----------|----------|----------|----------|----------|
| Constant voltage/Constant current | CV | | | | | | | | | | | |
| Operating voltage | 24 V DC | | | | | | | | | | | |
| Typ. power | 54 W | | | | | | | | | | | |
| Lifetime L70 | >36000 h | | | | | | | | | | | |

FURTHER DATA

| | 64982617 | 64982626 | 64982637 | 64982655 | 64982817 | 64982826 | 64982837 | 64982855 | 64983317 | 64983326 | 64983337 | 64983355 |
|------------------------------|--|----------|----------|----------|----------|----------|----------|----------|----------|----------|----------|----------|
| Material | Aluminium | | | | | | | | | | | |
| Finish | anodised | | | | | | | | | | | |
| Color of material | aluminium eloxiert | | | | | | | | | | | |
| Type of protection | IP 30 | | | | | | | | | | | |
| Indoor/Outdoor | Indoor | | | | | | | | | | | |
| Umgebungstemperatur Ta max | 55 ° C | | | | | | | | | | | |
| Length | 996 mm | | | | | | | | | | | |
| Width | 28 mm | | | | | | | | | | | |
| Height | 39 mm | | | | | | | | | | | |
| Weight | 1100 gr | | | | | | | | | | | |
| Cable length/cable finishing | 5m cable with free wire ends | | | | | | | | | | | |
| Remarks | Impact resistance: IK10 without mounting bracket and cantilever arm | | | | | | | | | | | |

Maximum values at Ta=25°C

ACCESSORIES

| | 62399487 | 62399488 | 62399489 |
|-------------|---|--|--|
| Description | mounting bracket standard, for mounting in ceiling and floor, incl. 2 screws and 2 dowels, distance to wall 15 mm | cantilever arm, for mounting on walls, incl. 2 screws and 2 dowels, distance to wall 65 mm | cantilever arm long, for mounting on walls, incl. 2 screws and 2 dowels, distance to wall 201 mm |
| Material | 304 stainless steel | | |
| Length | 73,7 mm | 71,4 mm | 206,3 mm |
| Width | 58 mm | | |
| Height | 20,4 mm | 55,5 mm | 85,5 mm |
| Remarks | Mounting bracket V2A steel, nylon dowel, spacer sleeve brass nickel plated, screws, washers, snorkel washer, nut | | |



The guarantee period for the product is 5 years and begins on the day of shipment.

Reference is the date of the delivery bill. The guarantee period may differ for accessories.